



## 2015 ANNUAL OREGON POPULATION REPORT TABLES

The population data in the 2015 annual report tables were compiled by the Population Research Center, Portland State University, 4/10/2016.

The tables in the tabs in this workbook hold the 2015 population estimates produced by the Population Research Center, Portland State University. The July 1 estimates of total population for counties and cities and towns were certified December 15, 2015.

Some tables include the U.S. Census Bureau's decennial Census counts and historical population estimates produced by our Center, and other tables include calculations of change since Census 2010. Also included are population estimates for broad age groups and 5-year age groups; the estimates for broad age groups were certified December 31, 2015.

There are footnotes that accompany Tables 1 through 7.

### Contents of Tabs:

#### Tab Name

#### Table Name and description

Table 1:

**Annual Population and Components of Population Change for Oregon: 1960-2015; July 1 Population Estimates and April Census Counts.**

*Annual populations, population change and the components of population change (births, deaths, natural increase, and net migration) are reported for Oregon. Two graphs are included, one displays annual growth rates, and the other shows the magnitude of change due to natural increase (the number of births minus the number of deaths), and net migration (the number of movers in minus the number of movers out).*

Table 2:

**Population Estimates of Oregon by Area type and Specific Metropolitan Areas: 2000 to 2015.**

*Population estimates are aggregated for incorporated and unincorporated, metropolitan and non-metropolitan areas in Oregon. Populations are also reported for each of Oregon's eight Metropolitan Statistical Areas, as designated by the U.S. Census Bureau.*

Table 3:

**Components of Population Change for Oregon's Counties: April 1, 2010 to July 1, 2015.**

*Populations are reported for Oregon and the 36 counties; population change and the components of population change from 2010 to 2015 are also included.*

Table 4:

**Population for Oregon and its Counties and Incorporated Cities and Towns: July 1, 2010-July 1, 2015; and Census Counts 1990-2010.**

*Annual population estimates from 2010-2015 are reported along with April 1 Census counts from 1990-2010. Sub-county population estimates are grouped by county; cities that are split between counties are reported in parts respective to their county location. Population estimates for the county unincorporated areas are also reported; an estimate for the unincorporated area is a residual of the county total and the sum of the cities within that county. Note that Census 2000 includes slight revisions to account for challenges to the census counts in the Count Resolution Program.*

**Table 5:** **Populations for Incorporated Cities Located in More than One County.**  
*Annual population estimates for 2010-2015, and 2000 and 2010 Census counts, for city parts by county are reported in this table.*

**Table 6:** **Rank of Incorporated Cities and Towns by July 1, 2015 Population Size.**  
*This table displays the rank order of Oregon's incorporated cities and towns by 2015 population size, largest to smallest.*

**Table 7:** **Alphabetical Listing of Oregon's Incorporated Cities and Towns with Populations for July 1, 2015 and Census 2010, and Change since Census 2010.**  
*Population estimates for 2015 and Census counts for 2010 are reported, along with numerical and percentage change during the time period.*

**Table 8:** **Population Added to Incorporated Cities Due to Annexations: April 1, 2010 - July 1, 2015.**  
*This table is a listing of Oregon's cities and towns in alphabetical order with the numbers of persons they have annexed since Census 2010.*

**Table 9:** **Population Estimates by Age and Sex for Oregon and Its Counties: July 1, 2015.**  
*Population estimates for Oregon's counties by 5-year age group are reported in three tables: 1) total population; 2) male population; and 3) female population. Population estimates for ages 15-19 are split into 15-17 and 18-19 age groups.*

**Table 10:** **Population Estimates by Broad Age Group (<18 Years, 18-64 Years, & over 64 Years)**  
*Population Estimates for ages 0-17 years, 18-64 years, and 65 years and older are reported in this table for Oregon and its counties.*

**Additional Notes** The **City of Prineville's** July 1, 2015 population estimate was revised and certified Dec. 31, 2015; The **City of Tualatin's** 2015 population estimate includes a correction for double-counting in its 2014 estimate.

**Road to 4 Million** See the Population Research Center's website, 'Road to 4 Million' for an historical look at Oregon's demographic journey to reach the statewide population milestone of 4 million in 2015.

<http://roadto4million.research.pdx.edu/>

**Contact information** Risa Proehl, Population Estimates Program Manager: 503.725.5103, [proehlr@pdx.edu](mailto:proehlr@pdx.edu)

**Table 1. Population and Components of Population Change for Oregon: 1960 to 2015**

**July 1 Population Estimates and April 1 Census Counts**

Prepared by Population Research Center, PSU, April 2015.

<b>Date</b>	<b>Population</b>	<b>Population Change</b>	<b>Births</b>	<b>Deaths</b>	<b>Natural Increase</b>	<b>Net Migration</b>
<b>April 1, 1960</b>	<b>1,768,687</b>					
July 1, 1961	1,798,000	29,313	31,660	14,060	17,600	11,713
July 1, 1962	1,828,000	30,000	36,535	16,735	19,800	10,200
July 1, 1963	1,856,000	28,000	32,971	16,171	16,800	11,200
July 1, 1964	1,884,000	28,000	32,687	17,287	15,400	12,600
July 1, 1965	1,912,000	28,000	32,585	17,785	14,800	13,200
July 1, 1966	1,947,200	35,200	31,210	17,710	13,500	21,700
July 1, 1967	1,980,000	32,800	30,711	18,211	12,500	20,300
July 1, 1968	2,018,900	38,900	32,464	19,364	13,100	25,800
July 1, 1969	2,057,000	38,100	34,423	20,123	14,300	23,800
<b>April 1, 1970</b>	<b>2,091,533</b>	<b>34,533</b>	<b>25,755</b>	<b>14,657</b>	<b>11,099</b>	<b>23,434</b>
July 1, 1970	2,099,150	7,617	8,838	4,883	3,956	3,661
July 1, 1971	2,129,900	30,750	34,349	19,809	14,540	16,210
July 1, 1972	2,167,000	37,100	31,332	19,532	11,800	25,300
July 1, 1973	2,217,600	50,600	30,939	20,439	10,500	40,100
July 1, 1974	2,271,900	54,300	31,123	20,223	10,900	43,400
July 1, 1975	2,326,200	54,300	32,934	20,234	12,700	41,600
July 1, 1976	2,386,700	60,500	33,613	20,013	13,600	46,900
July 1, 1977	2,451,900	65,200	37,546	21,246	16,300	48,900
July 1, 1978	2,521,900	70,000	37,231	20,131	17,100	52,900
July 1, 1979	2,584,300	62,400	41,271	21,471	19,800	42,600
<b>April 1, 1980</b>	<b>2,633,156</b>	<b>48,856</b>	<b>31,555</b>	<b>15,951</b>	<b>15,604</b>	<b>33,252</b>
July 1, 1980	2,639,915	6,759	10,773	5,439	5,334	1,425
July 1, 1981	2,660,735	20,820	42,052	21,675	20,377	444
July 1, 1982	2,656,185	-4,550	42,261	21,548	20,713	-25,263
July 1, 1983	2,635,000	-21,185	40,378	22,039	18,339	-39,524
July 1, 1984	2,660,000	25,000	39,611	22,702	16,909	8,091
July 1, 1985	2,675,800	15,800	39,296	23,531	15,765	35
July 1, 1986	2,661,500	-14,300	39,332	23,403	15,929	-30,229
July 1, 1987	2,690,000	28,500	38,702	23,695	15,007	13,493
July 1, 1988	2,741,000	51,000	39,120	24,752	14,368	36,632
July 1, 1989	2,791,000	50,000	40,648	24,705	15,943	34,057
<b>April 1, 1990</b>	<b>2,842,321</b>	<b>51,321</b>	<b>31,319</b>	<b>18,608</b>	<b>12,711</b>	<b>38,610</b>
July 1, 1990	2,847,000	4,679	10,708	6,268	4,439	240

<b>Date</b>	<b>Population</b>	<b>Population Change</b>	<b>Births</b>	<b>Deaths</b>	<b>Natural Increase</b>	<b>Net Migration</b>
July 1, 1991	2,927,800	80,800	42,644	25,004	17,640	63,160
July 1, 1992	2,990,610	62,810	42,427	25,166	17,261	45,549
July 1, 1993	3,059,110	68,500	41,442	26,543	14,899	53,601
July 1, 1994	3,119,940	60,830	41,487	27,564	13,923	46,907
July 1, 1995	3,182,690	62,750	42,426	27,552	14,874	47,876
July 1, 1996	3,245,100	62,410	43,196	28,768	14,428	47,982
July 1, 1997	3,302,140	57,040	43,625	29,201	14,424	42,616
July 1, 1998	3,350,080	47,940	44,696	28,705	15,991	31,949
July 1, 1999	3,393,410	43,330	45,188	29,848	15,340	27,990
<b>April 1, 2000</b>	3,421,436	28,026	33,805	21,827	11,978	16,048
July 1, 2000	3,431,085	9,649	11,729	7,082	4,647	5,002
July 1, 2001	3,470,385	39,300	45,536	29,934	15,602	23,698
July 1, 2002	3,502,588	32,203	44,995	30,828	14,167	18,036
July 1, 2003	3,538,591	36,003	45,686	30,604	15,082	20,921
July 1, 2004	3,578,895	40,303	45,599	30,721	14,878	25,425
July 1, 2005	3,626,938	48,043	45,892	30,717	15,175	32,868
July 1, 2006	3,685,206	58,268	46,946	30,771	16,175	42,093
July 1, 2007	3,739,359	54,153	49,404	31,394	18,010	36,143
July 1, 2008	3,784,182	44,823	49,658	32,008	17,650	27,173
July 1, 2009	3,815,775	31,593	47,958	31,382	16,576	15,017
<b>April 1, 2010</b>	3,831,074	15,299	34,364	23,879	10,485	4,814
July 1, 2010rev	3,837,300	6,226	11,892	7,814	4,078	2,148
July 1, 2011	3,857,625	20,325	45,381	32,437	12,944	7,381
July 1, 2012*	3,883,735	26,110	44,897	32,804	12,093	14,017
July 1, 2013*	3,919,020	35,285	44,969	33,168	11,801	23,484
July 1, 2014*	3,962,710	43,690	45,447	33,731	11,716	31,974
July 1, 2015	4,013,845	51,135	45,997	35,455	10,541	40,594

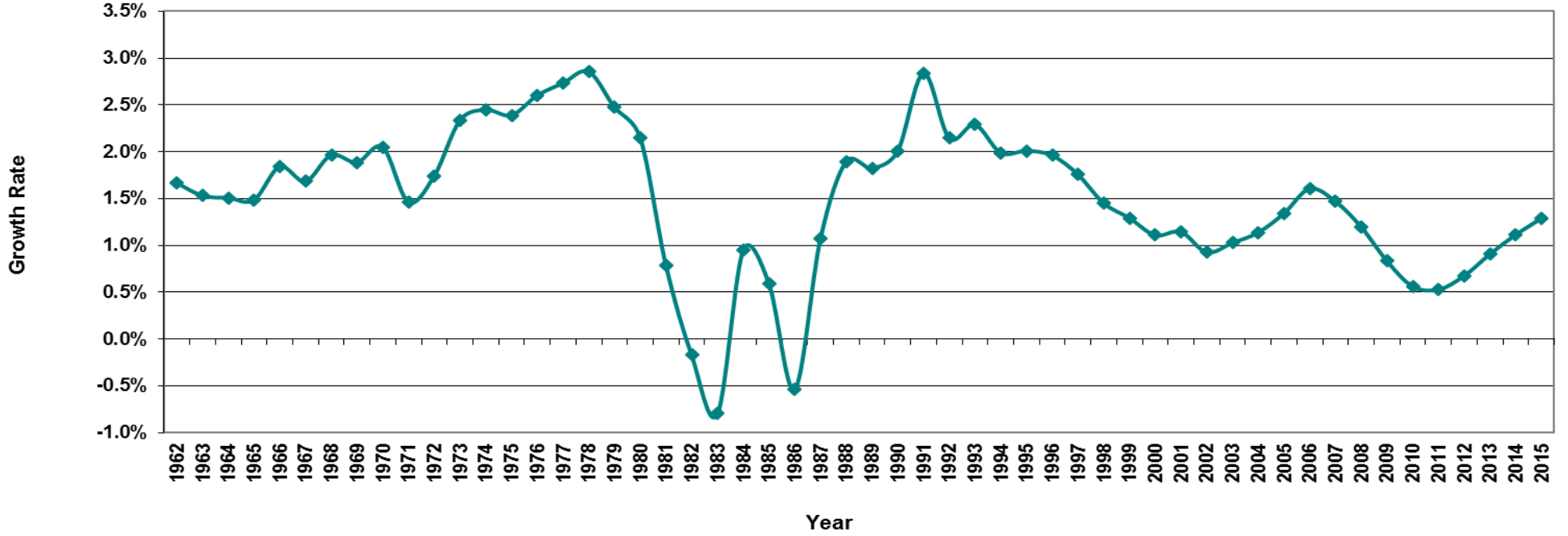
\* Births and/or Deaths, Natural Increase, and Net Migration are revised from last year's report.

**Additional Notes:**

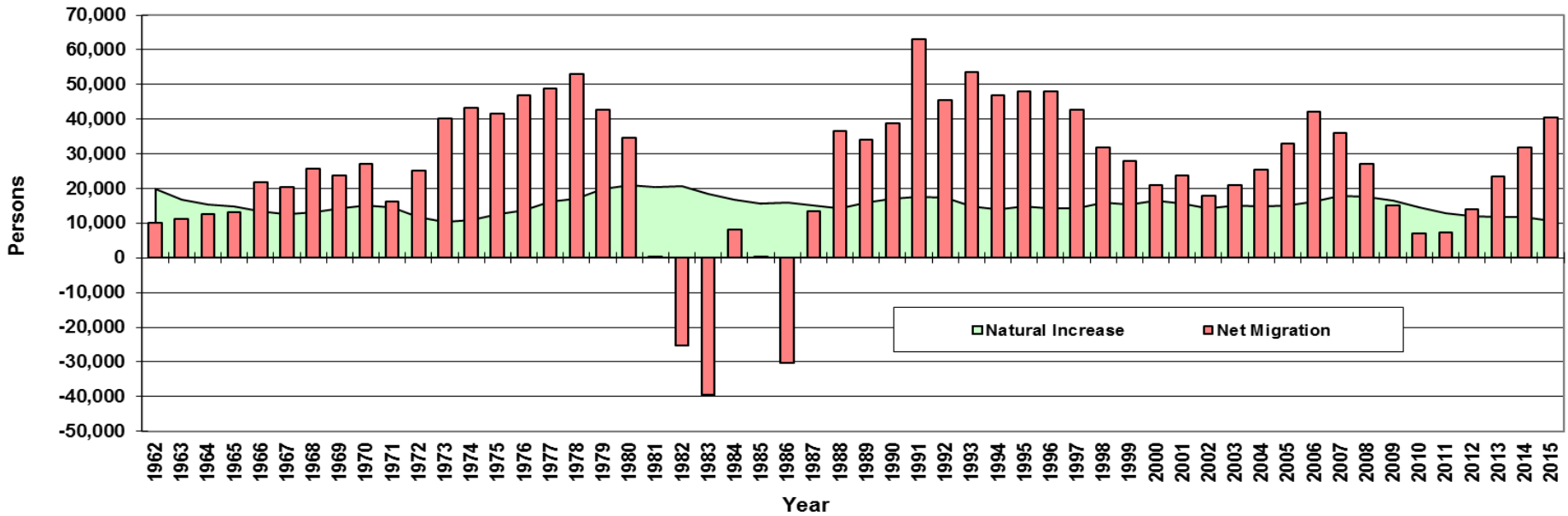
Estimates for July 1, 2000-July 1, 2009 are revised estimates that incorporate Census 2010 (they represent the pattern of migration in the originally certified estimates during the decade adjusted to Census 2010).

For full year July to July population change in a year that includes a decennial Census, add together population change reported for April and in July of the same year.

### Annual Population Growth Rates for Oregon



### Components of Oregon's Annual Population Change



**Table 2. Population Estimates of Oregon by Area Type and Specific Metropolitan Areas: 2000 to 2015**

Prepared by Population Research Center, PSU, April 2016.

<b>Area Type</b>					
<b>Date</b>	<b>State</b>	<b>Incorporated</b>	<b>Un- incorporated</b>	<b>Metropolitan</b>	<b>Non- metropolitan</b>
April 1, 2000	3,421,436	2,280,362	1,141,074	2,617,759	803,677
April 1, 2010	3,831,074	2,669,922	1,161,152	2,978,551	852,523
July 1, 2010rev	3,837,300	2,673,543	1,163,757	2,983,855	853,445
July 1, 2011	3,857,625	2,684,812	1,172,813	3,002,340	855,285
July 1, 2012	3,883,735	2,696,792	1,186,943	3,026,075	857,660
July 1, 2013	3,919,020	2,716,667	1,202,353	3,258,960	660,060
July 1, 2014	3,962,710	2,744,907	1,217,803	3,299,380	663,330
July 1, 2015	4,013,845	2,776,942	1,236,903	3,346,195	667,650

<b>Metropolitan Areas</b>								
<b>Date</b>	<b>Portland- Vancouver- Hillsboro</b>	<b>Eugene- Springfield</b>	<b>Medford</b>	<b>Salem</b>	<b>Corvallis</b>	<b>Bend-Redmond</b>	<b>Albany</b>	<b>Grants Pass</b>
April 1, 2000	1,927,881	322,977	181,273	347,214	78,153	115,367		
April 1, 2010	2,226,009	351,715	203,206	390,738	85,579	157,733		
July 1, 2010rev	2,230,578	352,010	203,340	391,395	85,735	157,905		
July 1, 2011	2,246,083	353,155	203,950	394,115	85,995	158,875		
July 1, 2012	2,266,573	354,200	204,630	397,120	86,785	160,140		
July 1, 2013	2,292,725	356,125	206,310	399,945	87,725	162,525	118,665	82,815
July 1, 2014	2,326,397	358,805	208,375	403,885	88,740	166,400	119,705	83,105
July 1, 2015	2,364,954	362,150	210,975	408,340	90,005	170,740	120,860	83,720

Portland-Vancouver-Hillsboro, OR-WA MSA consists of Clackamas, Columbia, Multnomah, Washington, and Yamhill Counties in Oregon; Clark and Skamania Counties in Washington. Population estimates for the Washington counties were obtained from Washington Office of Financial Management, which refer to April 1. July 1 populations for Clark and Skamania counties were estimated by PRC by extending their annual growth rates to reach July 1. Portland-Vancouver-Hillsboro MSA was renamed by the Census Bureau in Feb. 2013 from Portland-Vancouver-Beaverton MSA.

Eugene-Springfield MSA consists of Lane County.

Medford MSA consists of Jackson County.

Salem MSA consists of Marion and Polk Counties.

Corvallis MSA consists of Benton County.

Bend-Redmond MSA consists of Deschutes County. Bend-Redmond MSA was renamed in Feb. 2013 by the Census Bureau from Bend MSA.

Albany MSA consists of Linn County; it was designated as an MSA in Feb. 2013 by the Census Bureau.

Grants Pass MSA consists of Josephine County. It was designated as an MSA in Feb. 2013 by the Census Bureau.



**Table 3. Components of Population Change for Oregon's Counties: April 1, 2010 to July 1, 2015**

Prepared by Population Research Center, PSU, April 2016.

	<b>July 1, 2015</b>	<b>April 1, 2010</b>	<b>Population Change 2010-15</b>	<b>Percent Change 2010-15</b>	<b>Average Annual Change since Census</b>	<b>Births* 2010-15</b>	<b>Deaths* 2010-15</b>	<b>Natural Increase 2010-15</b>	<b>Net Migration 2010-15</b>
<b>OREGON Counties</b>	4,013,845	3,831,074	182,771	4.8%	1.10%	238,583	175,409	63,173	119,598
BAKER	16,425	16,134	291	1.8%	0.4%	900	1,074	-175	466
BENTON	90,005	85,579	4,426	5.2%	1.2%	3,840	2,895	944	3,482
CLACKAMAS	397,385	375,992	21,393	5.7%	1.3%	20,837	16,438	4,399	16,994
CLATSOP	37,750	37,039	711	1.9%	0.4%	2,226	2,031	195	516
COLUMBIA	50,390	49,351	1,039	2.1%	0.5%	2,648	2,195	454	585
COOS	62,990	63,043	-53	-0.1%	0.0%	3,251	4,518	-1,267	1,214
CROOK	21,085	20,978	107	0.5%	0.1%	986	1,241	-255	362
CURRY	22,470	22,364	106	0.5%	0.1%	991	1,936	-945	1,051
DESCHUTES	170,740	157,733	13,007	8.2%	1.9%	9,054	6,983	2,070	10,937
DOUGLAS	109,910	107,667	2,243	2.1%	0.5%	5,710	7,318	-1,608	3,851
GILLIAM	1,975	1,871	104	5.6%	1.3%	101	101	0	104
GRANT	7,430	7,445	-15	-0.2%	0.0%	329	431	-102	87
HARNEY	7,295	7,422	-127	-1.7%	-0.4%	431	444	-13	-114
HOOD RIVER	24,245	22,346	1,899	8.5%	1.9%	1,497	938	559	1,340
JACKSON	210,975	203,206	7,769	3.8%	0.9%	12,180	11,808	372	7,397
JEFFERSON	22,445	21,720	725	3.3%	0.8%	1,521	1,047	474	251
JOSEPHINE	83,720	82,713	1,007	1.2%	0.3%	4,328	6,173	-1,844	2,851
KLAMATH	67,110	66,380	730	1.1%	0.3%	4,194	3,807	386	344
LAKE	8,010	7,895	115	1.5%	0.3%	400	452	-52	167
LANE	362,150	351,715	10,435	3.0%	0.7%	18,680	17,414	1,266	9,169
LINCOLN	47,225	46,034	1,191	2.6%	0.6%	2,272	2,968	-696	1,887
LINN	120,860	116,672	4,188	3.6%	0.8%	7,574	6,163	1,411	2,777
MALHEUR	31,480	31,313	167	0.5%	0.1%	2,306	1,613	693	-526
MARION	329,770	315,335	14,435	4.6%	1.1%	23,017	13,703	9,313	5,122
MORROW	11,630	11,173	457	4.1%	0.9%	839	412	427	30
MULTNOMAH	777,490	735,334	42,156	5.7%	1.3%	49,795	28,889	20,906	21,250
POLK	78,570	75,403	3,167	4.2%	1.0%	4,538	3,395	1,143	2,024
SHERMAN	1,790	1,765	25	1.4%	0.3%	89	88	1	24
TILLAMOOK	25,690	25,250	440	1.7%	0.4%	1,296	1,477	-181	621
UMATILLA	79,155	75,889	3,266	4.3%	1.0%	5,881	3,301	2,580	686
UNION	26,625	25,748	877	3.4%	0.8%	1,577	1,345	232	645
WALLOWA	7,100	7,008	92	1.3%	0.3%	309	449	-140	232
WASCO	26,370	25,213	1,157	4.6%	1.1%	1,574	1,622	-48	1,205
WASHINGTON	570,510	529,710	40,800	7.7%	1.7%	37,524	16,170	21,355	19,445
WHEELER	1,445	1,441	4	0.3%	0.1%	51	107	-56	60
YAMHILL	103,630	99,193	4,437	4.5%	1.0%	5,839	4,464	1,375	3,062

\*The numbers of births and deaths in the most recent 2-3 years are revised annually.

**Table 4. Populations for Oregon and Its Counties and Incorporated Cities and Towns:  
July 1, 2010 - July 1, 2015 estimates; and Census Counts 1990-2010**

Prepared by Population Research Center, PSU, April 2016.

County and Cities	July 1 Population Estimates						April 1 Census Population		
	2015	2014	2013	2012	2011	2010rev	2010	2000	1990
<b>OREGON</b>	<b>4,013,845</b>	<b>3,962,710</b>	<b>3,919,020</b>	<b>3,883,735</b>	<b>3,857,625</b>	<b>3,837,300</b>	<b>3,831,074</b>	<b>3,421,436</b>	<b>2,842,321</b>
<b>BAKER</b>	<b>16,425</b>	<b>16,325</b>	<b>16,280</b>	<b>16,210</b>	<b>16,215</b>	<b>16,185</b>	<b>16,134</b>	<b>16,741</b>	<b>15,317</b>
Baker City	9,890	9,890	9,890	9,890	9,890	9,830	9,828	9,860	9,140
Greenhorn	2	2	2	2	2	2	-	-	-
Haines	415	415	415	415	415	415	416	426	405
Halfway	290	290	290	290	290	290	288	337	311
Huntington	445	445	445	440	440	440	440	515	522
Richland	175	175	175	160	160	155	156	147	161
Sumpter	205	205	205	205	205	205	204	171	119
Unity	75	70	70	70	70	70	71	131	87
Unincorporated	4,928	4,833	4,788	4,738	4,743	4,778	4,731	5,154	4,572
<b>BENTON</b>	<b>90,005</b>	<b>88,740</b>	<b>87,725</b>	<b>86,785</b>	<b>85,995</b>	<b>85,735</b>	<b>85,579</b>	<b>78,153</b>	<b>70,811</b>
Adair Village	845	845	845	845	840	840	840	536	554
Albany (part)*	7,267	7,146	6,912	6,764	6,698	6,587	6,463	5,104	15
Corvallis	57,390	56,535	55,345	55,055	54,520	54,460	54,462	49,322	44,757
Monroe	620	620	620	615	615	615	617	607	448
Philomath	4,650	4,630	4,625	4,620	4,610	4,590	4,584	3,838	2,983
Unincorporated	19,233	18,964	19,378	18,886	18,712	18,643	18,613	18,746	22,054
<b>CLACKAMAS</b>	<b>397,385</b>	<b>391,525</b>	<b>386,080</b>	<b>381,680</b>	<b>378,480</b>	<b>376,780</b>	<b>375,992</b>	<b>338,391</b>	<b>278,850</b>
Barlow	135	135	135	135	135	135	135	140	118
Canby	16,010	16,010	15,910	15,865	15,830	15,830	15,829	12,790	8,990
Damascus	10,625	10,625	10,595	10,585	10,575	10,540	10,539	Not incorporated yet.	
Estacada	3,085	2,935	2,900	2,850	2,850	2,730	2,695	2,371	2,016
Gladstone	11,505	11,495	11,495	11,495	11,495	11,495	11,497	11,438	10,152
Happy Valley	17,510	16,480	15,575	14,965	14,330	14,100	13,903	4,519	1,519
Johnson City	565	565	565	565	565	565	566	634	586
Lake Oswego (part)*	34,730	34,538	34,427	34,206	34,165	34,067	34,066	32,989	28,317
Milwaukie	20,505	20,485	20,500	20,435	20,400	20,290	20,291	20,490	18,670
Molalla	8,940	8,820	8,110	8,110	8,110	8,110	8,108	5,647	3,637
Oregon City	33,940	33,760	33,390	32,500	32,220	31,995	31,859	25,754	14,698
Portland (part)*	762	760	749	749	747	744	744	747	707
Rivergrove (part)*	458	451	411	386	344	258	257	287	267

County and Cities	July 1 Population Estimates						April 1 Census Population		
	2015	2014	2013	2012	2011	2010rev	2010	2000	1990
Sandy	10,395	10,170	9,990	9,880	9,780	9,655	9,570	5,385	4,154
Tualatin (part)*	2,864	2,903	2,904	2,905	2,869	2,869	2,862	2,664	1,406
West Linn	25,605	25,540	25,425	25,370	25,250	25,150	25,109	22,261	16,389
Wilsonville (part)*	20,476	19,594	19,187	18,267	17,421	17,385	17,371	13,987	7,096
Unincorporated	179,275	176,259	173,811	172,412	171,395	170,862	170,591	176,288	160,128
<b>CLATSOP</b>	<b>37,750</b>	<b>37,495</b>	<b>37,270</b>	<b>37,190</b>	<b>37,145</b>	<b>37,070</b>	<b>37,039</b>	<b>35,630</b>	<b>33,301</b>
Astoria	9,580	9,590	9,525	9,555	9,495	9,475	9,477	9,813	10,069
Cannon Beach	1,705	1,705	1,705	1,705	1,700	1,695	1,690	1,588	1,221
Gearhart	1,480	1,475	1,480	1,475	1,465	1,465	1,462	995	1,027
Hammond				Merged with Warrenton in 1991					589
Seaside	6,585	6,560	6,560	6,550	6,490	6,460	6,457	5,900	5,359
Warrenton	5,175	5,175	5,135	5,090	5,050	5,000	4,989	4,096	2,681
Unincorporated	13,225	12,990	12,865	12,815	12,945	12,975	12,964	13,238	12,355
<b>COLUMBIA</b>	<b>50,390</b>	<b>50,075</b>	<b>49,850</b>	<b>49,680</b>	<b>49,625</b>	<b>49,430</b>	<b>49,351</b>	<b>43,560</b>	<b>37,557</b>
Clatskanie	1,750	1,750	1,745	1,740	1,740	1,735	1,737	1,528	1,629
Columbia City	1,955	1,945	1,945	1,950	1,950	1,945	1,946	1,571	1,003
Prescott	55	55	55	55	55	55	55	72	63
Rainier	1,905	1,905	1,900	1,895	1,895	1,895	1,895	1,687	1,674
St. Helens	13,095	12,990	12,895	12,920	12,890	12,905	12,883	10,019	7,535
Scappoose	6,745	6,700	6,700	6,685	6,665	6,630	6,592	4,976	3,529
Vernonia	2,065	2,065	2,065	2,080	2,110	2,155	2,151	2,228	1,808
Unincorporated	22,820	22,665	22,545	22,355	22,320	22,110	22,092	21,479	20,316
<b>COOS</b>	<b>62,990</b>	<b>62,900</b>	<b>62,860</b>	<b>62,890</b>	<b>62,960</b>	<b>63,035</b>	<b>63,043</b>	<b>62,788</b>	<b>60,273</b>
Bandon	3,105	3,105	3,100	3,100	3,085	3,075	3,066	2,833	2,224
Coos Bay	16,470	16,315	16,160	16,060	16,010	15,970	15,967	15,372	15,076
Coquille	3,870	3,870	3,850	3,870	3,865	3,865	3,866	4,184	4,121
Lakeside	1,705	1,705	1,705	1,700	1,695	1,695	1,699	1,421	1,437
Myrtle Point	2,525	2,525	2,525	2,515	2,515	2,515	2,514	2,451	2,712
North Bend	9,755	9,730	9,720	9,710	9,710	9,695	9,695	9,544	9,614
Powers	695	700	695	695	690	690	689	734	682
Unincorporated	24,865	24,950	25,105	25,240	25,390	25,530	25,547	26,249	24,407
<b>CROOK</b>	<b>21,085</b>	<b>20,780</b>	<b>20,690</b>	<b>20,650</b>	<b>20,855</b>	<b>21,020</b>	<b>20,978</b>	<b>19,184</b>	<b>14,111</b>
Prineville	9,460	9,385	9,270	9,245	9,260	9,260	9,253	7,358	5,355
Unincorporated	11,625	11,395	11,420	11,405	11,595	11,760	11,725	11,826	8,756

County and Cities	July 1 Population Estimates						April 1 Census Population		
	2015	2014	2013	2012	2011	2010rev	2010	2000	1990
<b>CURRY</b>	<b>22,470</b>	22,355	22,300	22,295	22,335	22,355	22,364	21,137	19,327
Brookings	6,565	6,535	6,450	6,370	6,360	6,350	6,336	5,447	4,400
Gold Beach	2,275	2,275	2,275	2,280	2,255	2,255	2,253	1,897	1,546
Port Orford	1,140	1,135	1,135	1,135	1,135	1,135	1,133	1,153	1,025
Unincorporated	12,490	12,410	12,440	12,510	12,585	12,615	12,642	12,640	12,356
<b>DESCHUTES</b>	<b>170,740</b>	166,400	162,525	160,140	158,875	157,905	157,733	115,367	74,958
Bend	81,310	79,985	78,280	77,455	76,925	76,740	76,639	52,029	20,447
La Pine	1,670	1,670	1,670	1,670	1,670	1,660	1,653	Not incorporated yet.	
Redmond	27,050	26,770	26,590	26,345	26,305	26,225	26,215	13,481	7,165
Sisters	2,280	2,190	2,115	2,080	2,055	2,040	2,038	959	708
Unincorporated	58,430	55,785	53,870	52,590	51,920	51,240	51,188	48,898	46,638
<b>DOUGLAS</b>	<b>109,910</b>	<b>109,385</b>	<b>108,850</b>	<b>108,195</b>	<b>107,795</b>	<b>107,690</b>	<b>107,667</b>	<b>100,399</b>	<b>94,649</b>
Canyonville	1,905	1,910	1,910	1,910	1,885	1,885	1,884	1,293	1,219
Drain	1,160	1,160	1,160	1,160	1,155	1,155	1,151	1,021	1,086
Elkton	205	205	200	195	195	195	195	147	172
Glendale	875	875	875	875	875	875	874	855	707
Myrtle Creek	3,480	3,465	3,450	3,445	3,440	3,440	3,439	3,419	3,063
Oakland	940	935	935	925	925	925	927	954	844
Reedsport	4,150	4,150	4,150	4,145	4,145	4,150	4,154	4,378	4,796
Riddle	1,185	1,185	1,185	1,185	1,185	1,185	1,185	1,014	1,143
Roseburg	22,500	22,510	22,275	21,920	21,690	21,660	21,181	20,017	17,069
Sutherlin	7,975	7,945	7,930	7,905	7,880	7,840	7,810	6,669	5,020
Winston	5,410	5,410	5,400	5,385	5,385	5,385	5,379	4,613	3,773
Yoncalla	1,060	1,060	1,060	1,060	1,055	1,050	1,047	1,052	919
Unincorporated	59,065	58,575	58,320	58,085	57,980	57,945	58,441	54,967	54,838
<b>GILLIAM</b>	<b>1,975</b>	<b>1,975</b>	<b>1,945</b>	<b>1,900</b>	<b>1,880</b>	<b>1,870</b>	<b>1,871</b>	<b>1,915</b>	<b>1,717</b>
Arlington	605	605	605	585	585	585	586	524	425
Condon	695	695	695	695	690	685	682	759	635
Lonerock	20	20	20	20	20	20	21	24	11
Unincorporated	655	655	625	600	585	580	582	608	646
<b>GRANT</b>	<b>7,430</b>	<b>7,425</b>	<b>7,435</b>	<b>7,450</b>	<b>7,450</b>	<b>7,460</b>	<b>7,445</b>	<b>7,935</b>	<b>7,853</b>
Canyon City	705	705	705	715	710	705	703	669	648
Dayville	150	150	150	150	150	150	149	138	144

County and Cities	July 1 Population Estimates						April 1 Census Population		
	2015	2014	2013	2012	2011	2010rev	2010	2000	1990
Granite	40	40	40	40	40	40	38	24	8
John Day	1,735	1,745	1,745	1,745	1,755	1,750	1,744	1,821	1,857
Long Creek	195	195	195	195	195	195	197	228	249
Monument	130	130	130	130	130	130	128	151	162
Mt. Vernon	525	525	525	525	525	525	527	595	549
Prairie City	910	910	910	910	910	910	909	1,080	1,117
Seneca	215	200	200	200	200	200	199	223	191
Unincorporated	2,825	2,825	2,835	2,840	2,835	2,855	2,851	3,006	2,928
<b>HARNEY</b>	<b>7,295</b>	<b>7,265</b>	<b>7,260</b>	<b>7,315</b>	<b>7,375</b>	<b>7,445</b>	<b>7,422</b>	<b>7,609</b>	<b>7,060</b>
Burns	2,830	2,835	2,835	2,835	2,805	2,805	2,806	3,064	2,913
Hines	1,560	1,560	1,560	1,565	1,565	1,565	1,563	1,623	1,452
Unincorporated	2,905	2,870	2,865	2,915	3,005	3,075	3,053	2,922	2,695
<b>HOOD RIVER</b>	<b>24,245</b>	<b>23,730</b>	<b>23,295</b>	<b>22,875</b>	<b>22,625</b>	<b>22,385</b>	<b>22,346</b>	<b>20,411</b>	<b>16,903</b>
Cascade Locks	1,225	1,235	1,200	1,190	1,165	1,145	1,144	1,115	930
Hood River	7,685	7,545	7,460	7,375	7,320	7,180	7,167	5,831	4,632
Unincorporated	15,335	14,950	14,635	14,310	14,140	14,060	14,035	13,465	11,341
<b>JACKSON</b>	<b>210,975</b>	<b>208,375</b>	<b>206,310</b>	<b>204,630</b>	<b>203,950</b>	<b>203,340</b>	<b>203,206</b>	<b>181,273</b>	<b>146,389</b>
Ashland	20,405	20,340	20,295	20,325	20,255	20,095	20,078	19,522	16,252
Butte Falls	430	430	430	425	425	425	423	439	252
Central Point	17,485	17,375	17,315	17,275	17,235	17,185	17,169	12,493	7,512
Eagle Point	8,695	8,635	8,575	8,550	8,520	8,470	8,469	4,797	3,022
Gold Hill	1,220	1,220	1,220	1,220	1,220	1,220	1,220	1,073	980
Jacksonville	2,880	2,840	2,840	2,815	2,800	2,785	2,785	2,235	1,896
Medford	77,655	76,650	75,920	75,545	75,180	74,980	74,907	63,687	47,021
Phoenix	4,585	4,580	4,570	4,570	4,550	4,540	4,538	4,060	3,239
Rogue River	2,175	2,155	2,145	2,145	2,140	2,135	2,131	1,851	1,759
Shady Cove	3,025	3,015	2,920	2,920	2,910	2,905	2,904	2,307	1,351
Talent	6,270	6,230	6,170	6,115	6,095	6,070	6,066	5,589	3,274
Unincorporated	66,150	64,905	63,910	62,725	62,620	62,530	62,516	63,220	59,831
<b>JEFFERSON</b>	<b>22,445</b>	<b>22,205</b>	<b>22,040</b>	<b>21,940</b>	<b>21,845</b>	<b>21,750</b>	<b>21,720</b>	<b>19,009</b>	<b>13,676</b>
Culver	1,395	1,380	1,370	1,370	1,370	1,365	1,357	802	570
Madras	6,265	6,260	6,255	6,260	6,225	6,050	6,046	5,078	3,443
Metolius	710	700	705	705	710	710	710	729	450
Unincorporated	14,075	13,865	13,710	13,605	13,540	13,625	13,607	12,400	9,213

County and Cities	July 1 Population Estimates						April 1 Census Population		
	2015	2014	2013	2012	2011	2010rev	2010	2000	1990
<b>JOSEPHINE</b>	<b>83,720</b>	<b>83,105</b>	<b>82,815</b>	<b>82,775</b>	<b>82,820</b>	<b>82,775</b>	<b>82,713</b>	<b>75,726</b>	<b>62,649</b>
Cave Junction	1,910	1,905	1,905	1,900	1,885	1,885	1,883	1,363	1,126
Grants Pass	36,465	35,060	34,855	34,740	34,660	34,555	34,533	23,003	17,503
Unincorporated	45,345	46,140	46,055	46,135	46,275	46,335	46,297	51,360	44,020
<b>KLAMATH</b>	<b>67,110</b>	<b>66,910</b>	<b>66,810</b>	<b>66,740</b>	<b>66,580</b>	<b>66,505</b>	<b>66,380</b>	<b>63,775</b>	<b>57,702</b>
Bonanza	455	455	455	455	465	471	415	415	323
Chiloquin	735	735	735	735	735	735	734	715	673
Klamath Falls	21,580	21,500	21,495	21,465	21,120	20,925	20,840	19,460	17,737
Malin	815	815	815	815	805	805	805	640	725
Merrill	840	840	845	845	845	845	844	897	837
Unincorporated	42,685	42,565	42,465	42,425	42,610	42,724	42,742	41,648	37,407
<b>LAKE</b>	<b>8,010</b>	<b>7,990</b>	<b>7,940</b>	<b>7,920</b>	<b>7,885</b>	<b>7,890</b>	<b>7,895</b>	<b>7,422</b>	<b>7,186</b>
Lakeview	2,300	2,300	2,300	2,300	2,300	2,295	2,294	2,474	2,526
Paisley	245	245	245	245	245	245	243	247	350
Unincorporated	5,465	5,445	5,395	5,375	5,340	5,350	5,358	4,701	4,310
<b>LANE</b>	<b>362,150</b>	<b>358,805</b>	<b>356,125</b>	<b>354,200</b>	<b>353,155</b>	<b>352,010</b>	<b>351,715</b>	<b>322,977</b>	<b>282,912</b>
Coburg	1,055	1,045	1,045	1,045	1,045	1,040	1,035	969	763
Cottage Grove	9,875	9,840	9,785	9,770	9,745	9,705	9,686	8,445	7,403
Creswell	5,125	5,075	5,020	4,990	5,015	5,030	5,031	3,579	2,431
Dunes City	1,315	1,315	1,310	1,305	1,305	1,305	1,303	1,241	1,081
Eugene	163,400	160,775	159,580	158,335	157,010	156,295	156,185	137,893	112,733
Florence	8,620	8,565	8,480	8,470	8,470	8,465	8,466	7,263	5,171
Junction City	5,870	5,620	5,550	5,445	5,445	5,430	5,392	4,721	3,692
Lowell	1,065	1,060	1,060	1,055	1,045	1,045	1,045	880	785
Oakridge	3,240	3,220	3,215	3,210	3,205	3,205	3,205	3,172	3,063
Springfield	60,135	60,065	59,990	59,840	59,695	59,425	59,403	52,864	44,664
Veneta	4,700	4,690	4,635	4,610	4,610	4,565	4,561	2,762	2,519
Westfir	255	255	255	255	255	255	253	280	278
Unincorporated	97,495	97,280	96,200	95,870	96,310	96,245	96,150	98,908	98,329
<b>LINCOLN</b>	<b>47,225</b>	<b>46,890</b>	<b>46,560</b>	<b>46,295</b>	<b>46,155</b>	<b>46,135</b>	<b>46,034</b>	<b>44,479</b>	<b>38,889</b>
Depoe Bay	1,420	1,410	1,405	1,400	1,400	1,400	1,398	1,174	870
Lincoln City	8,485	8,400	8,380	7,965	7,960	7,935	7,930	7,437	5,903
Newport	10,165	10,095	10,160	10,150	10,065	10,030	9,989	9,532	8,437

County and Cities	July 1 Population Estimates						April 1 Census Population		
	2015	2014	2013	2012	2011	2010rev	2010	2000	1990
Siletz	1,235	1,235	1,235	1,225	1,210	1,210	1,212	1,133	992
Toledo	3,490	3,485	3,470	3,465	3,485	3,470	3,465	3,472	3,174
Waldport	2,075	2,060	2,050	2,040	2,040	2,035	2,033	2,050	1,595
Yachats	725	720	715	705	710	690	690	617	533
Unincorporated	19,630	19,485	19,145	19,345	19,285	19,365	19,317	19,064	17,385
<b>LINN</b>	<b>120,860</b>	<b>119,705</b>	<b>118,665</b>	<b>118,035</b>	<b>117,340</b>	<b>116,840</b>	<b>116,672</b>	<b>103,069</b>	<b>91,227</b>
Albany (part)*	44,403	44,124	43,808	43,946	43,822	43,738	43,695	35,748	29,525
Brownsville	1,690	1,680	1,670	1,670	1,670	1,670	1,668	1,449	1,281
Gates (part)*	43	43	43	43	42	42	40	42	41
Halsey	915	915	915	915	915	910	904	724	667
Harrisburg	3,645	3,635	3,630	3,630	3,585	3,565	3,567	2,795	1,939
Idanha (part)*	62	62	57	57	57	57	57	85	112
Lebanon	15,740	15,740	15,690	15,660	15,565	15,525	15,518	12,950	10,950
Lyons	1,160	1,160	1,160	1,160	1,160	1,160	1,161	1,008	938
Mill City (part)*	1,556	1,549	1,544	1,543	1,539	1,531	1,531	1,225	1,247
Millersburg	1,620	1,505	1,430	1,375	1,375	1,345	1,329	651	715
Scio	850	830	830	830	840	840	838	695	623
Sodaville	325	310	310	310	310	310	308	290	192
Sweet Home	9,090	9,060	9,065	9,025	9,005	8,945	8,925	8,016	6,850
Tangent	1,200	1,195	1,185	1,180	1,180	1,165	1,164	933	556
Waterloo	230	230	230	230	230	230	229	239	191
Unincorporated	38,330	37,667	37,098	36,461	36,044	35,807	35,738	36,219	35,400
<b>MALHEUR</b>	<b>31,480</b>	<b>31,470</b>	<b>31,440</b>	<b>31,395</b>	<b>31,445</b>	<b>31,345</b>	<b>31,313</b>	<b>31,615</b>	<b>26,038</b>
Adrian	180	180	180	180	180	175	177	147	131
Jordan Valley	175	175	175	180	180	180	181	239	364
Nyssa	3,285	3,285	3,270	3,270	3,270	3,265	3,267	3,163	2,629
Ontario	11,465	11,465	11,465	11,415	11,375	11,365	11,366	10,985	9,394
Vale	1,875	1,875	1,890	1,890	1,875	1,875	1,874	1,976	1,491
Unincorporated	14,500	14,490	14,460	14,460	14,565	14,485	14,448	15,105	12,029
<b>MARION</b>	<b>329,770</b>	<b>326,150</b>	<b>322,880</b>	<b>320,495</b>	<b>318,150</b>	<b>315,900</b>	<b>315,335</b>	<b>284,838</b>	<b>228,483</b>
Aumsville	3,945	3,895	3,815	3,700	3,680	3,605	3,584	3,003	1,650
Aurora	950	950	935	930	920	920	918	655	567
Detroit	210	210	205	205	205	205	202	262	331
Donald	980	975	980	980	980	980	979	625	316
Gates (part)*	442	442	442	442	433	433	431	429	458

County and Cities	July 1 Population Estimates						April 1 Census Population		
	2015	2014	2013	2012	2011	2010rev	2010	2000	1990
Gervais	2,555	2,530	2,520	2,520	2,520	2,510	2,464	2,009	992
Hubbard	3,225	3,220	3,200	3,185	3,180	3,175	3,173	2,483	1,881
Idanha (part)*	78	78	78	78	78	78	77	147	177
Jefferson	3,165	3,165	3,150	3,140	3,135	3,115	3,098	2,487	1,805
Keizer	36,985	36,985	36,795	36,735	36,715	36,570	36,478	32,203	21,884
Mill City (part)*	299	326	326	327	326	324	324	312	308
Mt. Angel	3,410	3,395	3,310	3,285	3,285	3,285	3,286	3,121	2,778
St. Paul	425	425	420	420	420	420	421	354	322
Salem (part)*	135,148	134,027	133,015	131,977	131,300	130,788	130,398	119,040	94,990
Scotts Mills	365	365	365	365	360	355	357	312	283
Silverton	9,590	9,460	9,330	9,290	9,265	9,230	9,222	7,414	5,635
Stayton	7,725	7,700	7,685	7,660	7,660	7,645	7,644	6,816	5,011
Sublimity	2,755	2,760	2,745	2,680	2,680	2,680	2,681	2,148	1,491
Turner	1,920	1,900	1,865	1,865	1,860	1,855	1,854	1,199	1,281
Woodburn	24,670	24,455	24,330	24,090	24,090	24,085	24,080	20,100	13,404
Unincorporated	90,929	88,887	87,369	86,622	85,059	83,642	83,664	79,719	72,919
<b>MORROW</b>	<b>11,630</b>	<b>11,525</b>	<b>11,425</b>	<b>11,300</b>	<b>11,270</b>	<b>11,175</b>	<b>11,173</b>	<b>10,995</b>	<b>7,625</b>
Boardman	3,505	3,445	3,405	3,235	3,235	3,220	3,220	2,855	1,387
Heppler	1,295	1,290	1,290	1,290	1,290	1,290	1,291	1,395	1,412
Ione	330	330	330	330	330	330	329	321	255
Irrigon	1,930	1,885	1,835	1,830	1,830	1,825	1,826	1,702	737
Lexington	255	255	255	240	240	240	238	263	286
Unincorporated	4,315	4,320	4,310	4,375	4,345	4,270	4,269	4,459	3,548
<b>MULTNOMAH</b>	<b>777,490</b>	<b>765,775</b>	<b>756,530</b>	<b>748,445</b>	<b>741,925</b>	<b>736,785</b>	<b>735,334</b>	<b>660,486</b>	<b>583,887</b>
Fairview	8,940	8,935	8,930	8,920	8,920	8,920	8,920	7,561	2,391
Gresham	107,065	106,455	106,180	105,970	105,795	105,595	105,594	90,205	68,249
Lake Oswego (part)*	2,561	2,558	2,554	2,554	2,551	2,544	2,544	2,274	2,253
Maywood Park	750	750	750	750	750	750	752	777	781
Portland (part)*	611,003	599,186	589,813	585,558	583,546	581,484	581,485	526,986	436,898
Troutdale	16,020	16,020	16,015	16,005	16,000	15,980	15,962	13,777	7,852
Wood Village	3,910	3,905	3,895	3,890	3,885	3,875	3,878	2,860	2,814
Unincorporated	27,241	27,966	28,393	24,798	20,478	17,637	16,199	16,046	62,649
<b>POLK</b>	<b>78,570</b>	<b>77,735</b>	<b>77,065</b>	<b>76,625</b>	<b>75,965</b>	<b>75,495</b>	<b>75,403</b>	<b>62,380</b>	<b>49,541</b>
Dallas	15,040	14,940	14,800	14,670	14,620	14,590	14,583	12,459	9,422
Falls City	950	950	950	945	945	945	947	966	818



County and Cities	July 1 Population Estimates						April 1 Census Population		
	2015	2014	2013	2012	2011	2010rev	2010	2000	1990
Independence	8,775	8,605	8,585	8,585	8,600	8,600	8,590	6,035	4,425
Monmouth	9,640	9,620	9,720	9,755	9,720	9,545	9,534	7,741	6,288
Salem (part)*	25,542	25,238	24,755	24,478	24,410	24,312	24,239	17,884	12,803
Willamina (part)*	848	848	847	845	845	845	845	716	554
Unincorporated	17,775	17,534	17,408	17,347	16,825	16,658	16,665	16,579	15,231
<b>SHERMAN</b>	<b>1,790</b>	<b>1,785</b>	<b>1,780</b>	<b>1,765</b>	<b>1,765</b>	<b>1,765</b>	<b>1,765</b>	<b>1,934</b>	<b>1,918</b>
Grass Valley	165	165	165	165	165	165	164	171	160
Moro	325	325	325	325	325	325	324	337	292
Rufus	280	280	255	255	250	250	249	268	295
Wasco	420	415	415	410	410	410	410	381	374
Unincorporated	600	600	620	610	615	615	618	777	797
<b>TILLAMOOK</b>	<b>25,690</b>	<b>25,480</b>	<b>25,375</b>	<b>25,305</b>	<b>25,255</b>	<b>25,260</b>	<b>25,250</b>	<b>24,262</b>	<b>21,570</b>
Bay City	1,320	1,320	1,310	1,305	1,295	1,290	1,286	1,149	1,027
Garibaldi	790	790	790	785	785	780	779	899	886
Manzanita	620	615	615	610	605	600	598	564	513
Nehalem	280	280	280	270	270	270	271	203	232
Rockaway Beach	1,335	1,325	1,325	1,320	1,320	1,315	1,312	1,267	970
Tillamook	4,900	4,880	4,885	4,880	4,905	4,920	4,935	4,352	4,006
Wheeler	405	405	415	415	415	415	414	391	335
Unincorporated	16,040	15,865	15,755	15,720	15,660	15,670	15,655	15,437	13,601
<b>UMATILLA</b>	<b>79,155</b>	<b>78,340</b>	<b>77,895</b>	<b>77,120</b>	<b>76,580</b>	<b>76,000</b>	<b>75,889</b>	<b>70,548</b>	<b>59,249</b>
Adams	370	370	370	365	365	365	350	297	223
Athena	1,140	1,125	1,125	1,125	1,125	1,125	1,126	1,221	997
Echo	705	705	700	705	700	700	699	650	500
Helix	195	195	190	190	185	185	184	183	150
Hermiston	17,520	17,345	17,240	16,995	16,865	16,795	16,745	13,154	10,047
Milton-Freewater	7,070	7,060	7,060	7,050	7,055	7,045	7,050	6,470	5,533
Pendleton	16,845	16,700	16,780	16,715	16,625	16,605	16,612	16,354	15,142
Pilot Rock	1,505	1,505	1,505	1,505	1,505	1,505	1,502	1,532	1,478
Stanfield	2,125	2,115	2,095	2,075	2,055	2,045	2,043	1,979	1,568
Ukiah	245	245	235	235	230	185	186	255	250
Umatilla	7,060	7,050	7,025	7,015	6,980	6,905	6,906	4,978	3,046
Weston	685	685	675	675	675	670	667	717	606
Unincorporated	23,690	23,240	22,895	22,470	22,215	21,870	21,819	22,758	19,709

County and Cities	July 1 Population Estimates						April 1 Census Population		
	2015	2014	2013	2012	2011	2010rev	2010	2000	1990
<b>UNION</b>	<b>26,625</b>	<b>26,485</b>	<b>26,325</b>	<b>26,175</b>	<b>25,980</b>	<b>25,810</b>	<b>25,748</b>	<b>24,530</b>	<b>23,598</b>
Cove	550	550	550	550	550	550	552	594	507
Elgin	1,730	1,725	1,725	1,725	1,725	1,710	1,711	1,654	1,586
Imbler	305	305	305	305	305	305	306	284	299
Island City	1,025	1,025	1,015	1,015	1,010	1,000	989	916	696
La Grande	13,165	13,150	13,125	13,110	13,095	13,095	13,082	12,327	11,766
North Powder	445	445	445	445	445	440	439	489	448
Summerville	135	135	135	135	135	135	135	117	142
Union	2,150	2,150	2,150	2,145	2,140	2,130	2,121	1,926	1,847
Unincorporated	7,120	7,000	6,875	6,745	6,575	6,445	6,413	6,223	6,307
<b>WALLOWA</b>	<b>7,100</b>	<b>7,070</b>	<b>7,045</b>	<b>7,015</b>	<b>6,995</b>	<b>7,005</b>	<b>7,008</b>	<b>7,226</b>	<b>6,911</b>
Enterprise	1,940	1,940	1,940	1,940	1,940	1,940	1,940	1,895	1,905
Joseph	1,095	1,095	1,095	1,090	1,090	1,085	1,081	1,054	1,073
Lostine	215	215	215	215	215	215	213	263	231
Wallowa	810	810	810	810	805	810	808	869	748
Unincorporated	3,040	3,010	2,985	2,960	2,945	2,955	2,966	3,145	2,954
<b>WASCO</b>	<b>26,370</b>	<b>26,105</b>	<b>25,810</b>	<b>25,485</b>	<b>25,300</b>	<b>25,235</b>	<b>25,213</b>	<b>23,791</b>	<b>21,683</b>
Antelope	50	50	45	45	45	45	46	59	34
Dufur	605	605	605	605	605	605	604	588	527
Maupin	425	425	425	425	420	420	418	411	456
Mosier	445	440	440	440	435	435	433	410	244
Shaniko	35	35	35	35	35	35	36	26	26
The Dalles	14,515	14,480	14,440	14,440	14,440	13,630	13,620	12,156	11,021
Unincorporated	10,295	10,070	9,820	9,495	9,320	10,065	10,056	10,141	9,375
<b>WASHINGTON</b>	<b>570,510</b>	<b>560,465</b>	<b>550,990</b>	<b>542,845</b>	<b>536,370</b>	<b>531,070</b>	<b>529,710</b>	<b>445,342</b>	<b>311,554</b>
Banks	1,775	1,775	1,775	1,775	1,775	1,775	1,777	1,286	563
Beaverton	94,215	93,395	91,935	91,205	90,835	89,925	89,803	76,129	53,307
Cornelius	11,900	11,910	11,915	11,915	11,915	11,875	11,869	9,652	6,148
Durham	1,880	1,880	1,880	1,365	1,360	1,355	1,351	1,382	748
Forest Grove	23,080	22,715	22,340	21,460	21,275	21,130	21,083	17,708	13,559
Gaston	640	640	640	640	640	635	637	600	563
Hillsboro	97,480	95,310	93,340	92,550	92,350	91,970	91,611	70,186	37,598
King City	3,425	3,365	3,320	3,225	3,135	3,115	3,111	1,949	2,060
Lake Oswego (part)*	9	9	9	9	9	9	9	15	6
North Plains	2,015	2,015	2,015	1,990	1,990	1,970	1,947	1,605	972

County and Cities	July 1 Population Estimates						April 1 Census Population		
	2015	2014	2013	2012	2011	2010rev	2010	2000	1990
Portland (part)*	1,590	1,564	1,558	1,558	1,552	1,547	1,547	1,388	1,197
Rivergrove (part)*	37	34	34	34	31	32	32	37	27
Sherwood	19,080	18,955	18,575	18,265	18,255	18,205	18,194	11,791	3,093
Tigard	49,280	49,140	49,135	48,695	48,415	48,090	48,035	41,223	29,435
Tualatin (part)*	23,726	24,022	23,606	23,215	23,251	23,191	23,192	20,127	13,258
Wilsonville (part)*	2,394	2,386	2,363	2,248	2,144	2,140	2,138	4	10
Unincorporated	237,984	231,350	226,551	222,696	217,438	214,106	213,374	190,260	149,010
<b>WHEELER</b>	<b>1,445</b>	<b>1,440</b>	<b>1,430</b>	<b>1,425</b>	<b>1,435</b>	<b>1,440</b>	<b>1,441</b>	<b>1,547</b>	<b>1,396</b>
Fossil	475	475	475	475	475	475	473	469	399
Mitchell	130	130	130	130	130	130	130	170	163
Spray	160	160	160	160	160	160	160	140	149
Unincorporated	680	675	665	660	670	675	678	768	685
<b>YAMHILL</b>	<b>103,630</b>	<b>102,525</b>	<b>101,400</b>	<b>100,550</b>	<b>99,850</b>	<b>99,405</b>	<b>99,193</b>	<b>84,992</b>	<b>65,551</b>
Amity	1,620	1,620	1,610	1,610	1,615	1,615	1,614	1,478	1,175
Carlton	2,125	2,070	2,065	2,035	2,035	2,015	2,007	1,514	1,289
Dayton	2,590	2,570	2,550	2,535	2,530	2,535	2,534	2,119	1,526
Dundee	3,185	3,180	3,170	3,175	3,175	3,170	3,162	2,598	1,663
Lafayette	3,905	3,825	3,755	3,735	3,740	3,740	3,742	2,586	1,292
McMinnville	33,080	32,705	32,510	32,435	32,270	32,240	32,187	26,499	17,894
Newberg	22,900	22,765	22,580	22,300	22,230	22,110	22,068	18,064	13,086
Sheridan	6,115	6,225	6,180	6,180	6,125	6,125	6,127	5,561	3,979
Willamina (part)*	1,197	1,197	1,183	1,180	1,180	1,180	1,180	1,128	1,194
Yamhill	1,070	1,050	1,030	1,020	1,020	1,020	1,024	794	867
Unincorporated	25,843	25,318	24,767	24,345	23,930	23,655	23,548	22,651	21,586

\*City is located and has population in more than one county.

Note: Cities/towns that have conducted local enumerations following Census 2010 are: Adams and Bonanza in 2010; Rivergrove and Ukiah in 2011; and Lexington in 2013.

Tualatin's 2015 population estimate includes a correction to account for double-counting in the 2014 estimate; Prineville's July 1, 2015 population estimate was revised Dec. 31, 2015.

*Please use caution when comparing the population estimates of the unincorporated county areas, and note that the population estimates for the unincorporated areas represent revised estimates rather than estimates resulting from measured direct change during the year. The unincorporated area is a residual of the county total and the sum of the cities; thus the unincorporated area population is affected by those cities not submitting to PRC the completed annual form since the population of a city is held constant to the previous year if no recent form data are received. Additionally, cities sending*

County and Cities	July 1 Population Estimates						April 1 Census Population		
	2015	2014	2013	2012	2011	2010rev	2010	2000	1990

*incomplete data will affect the population residual in the unincorporated area. Annexations also affect unincorporated populations.*

**Table 5. Populations for Incorporated Cities Located in More than One County**

Prepared by Population Research Center, PSU, April 2016.

City and Counties	July 1 Population Estimate						April 1 Census Population	
	2,015	2,014	2013	2012	2011	2010rev	2010	2000
<b>Albany</b>	<b>51,670</b>	<b>51,270</b>	<b>50,720</b>	<b>50,710</b>	<b>50,520</b>	<b>50,325</b>	<b>50,158</b>	<b>40,852</b>
in Benton	7,267	7,146	6,912	6,764	6,698	6,587	6,463	5,104
in Linn	44,403	44,124	43,808	43,946	43,822	43,738	43,695	35,748
<b>Gates</b>	<b>485</b>	<b>485</b>	<b>485</b>	<b>485</b>	<b>475</b>	<b>475</b>	<b>471</b>	<b>471</b>
in Linn	43	43	43	43	42	42	40	42
in Marion	442	442	442	442	433	433	431	429
<b>Idanha</b>	<b>140</b>	<b>140</b>	<b>135</b>	<b>135</b>	<b>135</b>	<b>135</b>	<b>134</b>	<b>232</b>
in Linn	62	62	57	57	57	57	57	85
in Marion	78	78	78	78	78	78	77	147
<b>Lake Oswego</b>	<b>37,300</b>	<b>37,105</b>	<b>36,990</b>	<b>36,770</b>	<b>36,725</b>	<b>36,620</b>	<b>36,619</b>	<b>35,278</b>
in Clackamas	34,730	34,538	34,427	34,206	34,165	34,067	34,066	32,989
in Multnomah	2,561	2,558	2,554	2,554	2,551	2,544	2,544	2,274
in Washington	9	9	9	9	9	9	9	15
<b>Mill City</b>	<b>1,855</b>	<b>1,875</b>	<b>1,870</b>	<b>1,870</b>	<b>1,865</b>	<b>1,855</b>	<b>1,855</b>	<b>1,537</b>
in Linn	1,556	1,549	1,544	1,543	1,539	1,531	1,531	1,225
in Marion	299	326	326	327	326	324	324	312
<b>Portland</b>	<b>613,355</b>	<b>601,510</b>	<b>592,120</b>	<b>587,865</b>	<b>585,845</b>	<b>583,775</b>	<b>583,776</b>	<b>529,121</b>
in Clackamas	762	760	749	749	747	744	744	747
in Multnomah	611,003	599,186	589,813	585,558	583,546	581,484	581,485	526,986
in Washington	1,590	1,564	1,558	1,558	1,552	1,547	1,547	1,388
<b>Rivergrove*</b>	<b>495</b>	<b>485</b>	<b>445</b>	<b>420</b>	<b>375</b>	<b>290</b>	<b>289</b>	<b>324</b>
in Clackamas	458	451	411	386	344	258	257	287
in Washington	37	34	34	34	31	32	32	37
<b>Salem</b>	<b>160,690</b>	<b>159,265</b>	<b>157,770</b>	<b>156,455</b>	<b>155,710</b>	<b>155,100</b>	<b>154,637</b>	<b>136,924</b>
in Marion	135,148	134,027	133,015	131,989	131,306	130,788	130,398	119,040
in Polk	25,542	25,238	24,755	24,466	24,404	24,312	24,239	17,884
<b>Tualatin</b>	<b>26,590</b>	<b>26,925</b>	<b>26,510</b>	<b>26,120</b>	<b>26,120</b>	<b>26,060</b>	<b>26,054</b>	<b>22,791</b>
in Clackamas	2,905	2,903	2,904	2,905	2,869	2,869	2,862	2,664
in Washington	23,685	24,022	23,606	23,215	23,251	23,191	23,192	20,127
<b>Willamina</b>	<b>2,045</b>	<b>2,045</b>	<b>2,030</b>	<b>2,025</b>	<b>2,025</b>	<b>2,025</b>	<b>2,025</b>	<b>1,844</b>
in Polk	848	848	847	845	845	845	845	716
in Yamhill	1,197	1,197	1,183	1,180	1,180	1,180	1,180	1,128
<b>Wilsonville</b>	<b>22,870</b>	<b>21,980</b>	<b>21,550</b>	<b>20,515</b>	<b>19,565</b>	<b>19,525</b>	<b>19,509</b>	<b>13,991</b>
in Clackamas	20,476	19,594	19,187	18,267	17,421	17,385	17,371	13,987
in Washington	2,394	2,386	2,363	2,248	2,144	2,140	2,138	4

\*A local enumeration was conducted in 2011.

Note: The 2015 population estimate for Tualatin, Washington County includes a correction to account for double-counting in the 2014 estimate.

**Table 6. Rank of Incorporated Cities by July 1, 2015 Population Size**  
 Prepared by Population Research Center, PSU, April 2016.

City	Population	City	Population	City	Population	City	Population	City	Population
Portland	613,355	Silverton	9,590	Dayton	2,590	Port Orford	1,140	Scotts Mills	365
Eugene	163,400	Astoria	9,580	Gervais	2,555	Joseph	1,095	Ione	330
Salem	160,690	Prineville	9,460	Myrtle Point	2,525	Yamhill	1,070	Moro	325
Gresham	107,065	Sweet Home	9,090	Lakeview	2,300	Lowell	1,065	Sodaville	325
Hillsboro	97,480	Fairview	8,940	Sisters	2,280	Yoncalla	1,060	Imbler	305
Beaverton	94,215	Molalla	8,940	Gold Beach	2,275	Coburg	1,055	Halfway	290
Bend	81,310	Independence	8,775	Rogue River	2,175	Island City	1,025	Nehalem	280
Medford	77,655	Eagle Point	8,695	Union	2,150	Donald	980	Rufus	280
Springfield	60,135	Florence	8,620	Carlton	2,125	Aurora	950	Lexington	255
Corvallis	57,390	Lincoln City	8,485	Stanfield	2,125	Falls City	950	Westfir	255
Albany	51,670	Sutherlin	7,975	Waldport	2,075	Oakland	940	Paisley	245
Tigard	49,280	Stayton	7,725	Vernonia	2,065	Halsey	915	Ukiah	245
Lake Oswego	37,300	Hood River	7,685	Willamina	2,045	Prairie City	910	Waterloo	230
Keizer	36,985	Milton-Freewater	7,070	North Plains	2,015	Glendale	875	Lostine	215
Grants Pass	36,465	Umatilla	7,060	Columbia City	1,955	Scio	850	Seneca	215
Oregon City	33,940	Scappoose	6,745	Enterprise	1,940	Adair Village	845	Detroit	210
McMinnville	33,080	Seaside	6,585	Irrigon	1,930	Merrill	840	Elkton	205
Redmond	27,050	Brookings	6,565	Turner	1,920	Malin	815	Sumpter	205
Tualatin*	26,590	Talent	6,270	Cave Junction	1,910	Wallowa	810	Helix	195
West Linn	25,605	Madras	6,265	Canyonville	1,905	Garibaldi	790	Long Creek	195
Woodburn	24,670	Sheridan	6,115	Rainier	1,905	Maywood Park	750	Adrian	180
Forest Grove	23,080	Junction City	5,870	Durham	1,880	Chiloquin	735	Jordan Valley	175
Newberg	22,900	Winston	5,410	Vale	1,875	Yachats	725	Richland	175
Wilsonville	22,870	Warrenton	5,175	Mill City	1,855	Metolius	710	Grass Valley	165
Roseburg	22,500	Creswell	5,125	Banks	1,775	Canyon City	705	Spray	160
Klamath Falls	21,580	Tillamook	4,900	Clatskanie	1,750	Echo	705	Dayville	150
Milwaukie	20,505	Veneta	4,700	John Day	1,735	Condon	695	Idanha	140
Ashland	20,405	Philomath	4,650	Elgin	1,730	Powers	695	Barlow	135
Sherwood	19,080	Phoenix	4,585	Cannon Beach	1,705	Weston	685	Summerville	135
Hermiston	17,520	Reedsport	4,150	Lakeside	1,705	Gaston	640	Mitchell	130
Happy Valley	17,510	Aumsville	3,945	Brownsville	1,690	Manzanita	620	Monument	130
Central Point	17,485	Wood Village	3,910	La Pine	1,670	Monroe	620	Unity	75
Pendleton	16,845	Lafayette	3,905	Amity	1,620	Arlington	605	Prescott	55
Coos Bay	16,470	Coquille	3,870	Millersburg	1,620	Dufur	605	Antelope	50
Troutdale	16,020	Harrisburg	3,645	Hines	1,560	Johnson City	565	Granite	40
Canby	16,010	Boardman	3,505	Pilot Rock	1,505	Cove	550	Shaniko	35
Lebanon	15,740	Toledo	3,490	Gearhart	1,480	Mt. Vernon	525	Lonerock	20
Dallas	15,040	Myrtle Creek	3,480	Depoe Bay	1,420	Rivergrove	495	Greenhorn	2
The Dalles	14,515	King City	3,425	Culver	1,395	Gates	485		
La Grande	13,165	Mt. Angel	3,410	Rockaway Beach	1,335	Fossil	475		
St. Helens	13,095	Nyssa	3,285	Bay City	1,320	Bonanza	455		
Cornelius	11,900	Oakridge	3,240	Dunes City	1,315	Huntington	445		
Gladstone	11,505	Hubbard	3,225	Heppner	1,295	Mosier	445		
Ontario	11,465	Dundee	3,185	Siletz	1,235	North Powder	445		
Damascus	10,625	Jefferson	3,165	Cascade Locks	1,225	Butte Falls	430		
Sandy	10,395	Bandon	3,105	Gold Hill	1,220	Maupin	425		
Newport	10,165	Estacada	3,085	Tangent	1,200	St. Paul	425		
Baker City	9,890	Shady Cove	3,025	Riddle	1,185	Wasco	420		
Cottage Grove	9,875	Jacksonville	2,880	Drain	1,160	Haines	415		
North Bend	9,755	Burns	2,830	Lyons	1,160	Wheeler	405		
Monmouth	9,640	Sublimity	2,755	Athens	1,140	Adams	370		

\*Revised July 1, 2015 population estimate, certified Dec. 31, 2015.

**Table 7. Alphabetical Listing of Incorporated Cities with Population for July 1, 2015,****Census 2010 Population and Change since Census 2010.**

Prepared by Population Research Center, PSU, April 2016.

Estimate					Estimate				
	July 1,	Census	Change	Percent		July 1,	Census	Change	Percent
City	2015	April 1,	2010-2015	Change	City	2015	April 1,	2010-2015	Change
		2010		2010-2015			2010		2010-2015
Adair Village	845	840	5	0.6%	Enterprise	1,940	1,940	0	0.0%
Adams*	370	350	20	5.7%	Estacada	3,085	2,695	390	14.5%
Adrian	180	177	3	1.7%	Eugene	163,400	156,185	7,215	4.6%
Albany	51,670	50,158	1,512	3.0%	Fairview	8,940	8,920	20	0.2%
Amity	1,620	1,614	6	0.4%	Falls City	950	947	3	0.3%
Antelope	50	46	4	8.7%	Florence	8,620	8,466	154	1.8%
Arlington	605	586	19	3.2%	Forest Grove	23,080	21,083	1,997	9.5%
Ashland	20,405	20,078	327	1.6%	Fossil	475	473	2	0.4%
Astoria	9,580	9,477	103	1.1%	Garibaldi	790	779	11	1.4%
Athena	1,140	1,126	14	1.2%	Gaston	640	637	3	0.5%
Aumsville	3,945	3,584	361	10.1%	Gates	485	471	14	3.0%
Aurora	950	918	32	3.5%	Gearhart	1,480	1,462	18	1.2%
Baker City	9,890	9,828	62	0.6%	Gervais	2,555	2,464	91	3.7%
Bandon	3,105	3,066	39	1.3%	Gladstone	11,505	11,497	8	0.1%
Banks	1,775	1,777	-2	-0.1%	Glendale	875	874	1	0.1%
Barlow	135	135	0	0.0%	Gold Beach	2,275	2,253	22	1.0%
Bay City	1,320	1,286	34	2.6%	Gold Hill	1,220	1,220	0	0.0%
Beaverton	94,215	89,803	4,412	4.9%	Granite	40	38	2	5.3%
Bend	81,310	76,639	4,671	6.1%	Grants Pass	36,465	34,533	1,932	5.6%
Boardman	3,505	3,220	285	8.9%	Grass Valley	165	164	1	0.6%
Bonanza*	455	415	40	9.6%	Greenhorn	2	0	2	-
Brookings	6,565	6,336	229	3.6%	Gresham	107,065	105,594	1,471	1.4%
Brownsville	1,690	1,668	22	1.3%	Haines	415	416	-1	-0.2%
Burns	2,830	2,806	24	0.9%	Halfway	290	288	2	0.7%
Butte Falls	430	423	7	1.7%	Halsey	915	904	11	1.2%
Canby	16,010	15,829	181	1.1%	Happy Valley	17,510	13,903	3,607	25.9%
Cannon Beach	1,705	1,690	15	0.9%	Harrisburg	3,645	3,567	78	2.2%
Canyon City	705	703	2	0.3%	Helix	195	184	11	6.0%
Canyonville	1,905	1,884	21	1.1%	Heppler	1,295	1,291	4	0.3%
Carlton	2,125	2,007	118	5.9%	Hermiston	17,520	16,745	775	4.6%
Cascade Locks	1,225	1,144	81	7.1%	Hillsboro	97,480	91,611	5,869	6.4%
Cave Junction	1,910	1,883	27	1.4%	Hines	1,560	1,563	-3	-0.2%
Central Point	17,485	17,169	316	1.8%	Hood River	7,685	7,167	518	7.2%
Chiloquin	735	734	1	0.1%	Hubbard	3,225	3,173	52	1.6%
Clatskanie	1,750	1,737	13	0.7%	Huntington	445	440	5	1.1%
Coburg	1,055	1,035	20	1.9%	Idanha	140	134	6	4.5%
Columbia City	1,955	1,946	9	0.5%	Imbler	305	306	-1	-0.3%
Condon	695	682	13	1.9%	Independence	8,775	8,590	185	2.2%
Coos Bay	16,470	15,967	503	3.2%	Ione	330	329	1	0.3%
Coquille	3,870	3,866	4	0.1%	Irrigon	1,930	1,826	104	5.7%
Cornelius	11,900	11,869	31	0.3%	Island City	1,025	989	36	3.6%
Corvallis	57,390	54,462	2,928	5.4%	Jacksonville	2,880	2,785	95	3.4%
Cottage Grove	9,875	9,686	189	2.0%	Jefferson	3,165	3,098	67	2.2%
Cove	550	552	-2	-0.4%	John Day	1,735	1,744	-9	-0.5%
Creswell	5,125	5,031	94	1.9%	Johnson City	565	566	-1	-0.2%
Culver	1,395	1,357	38	2.8%	Jordan Valley	175	181	-6	-3.3%
Dallas	15,040	14,583	457	3.1%	Joseph	1,095	1,081	14	1.3%
Damascus	10,625	10,539	86	0.8%	Junction City	5,870	5,392	478	8.9%
Dayton	2,590	2,534	56	2.2%	Keizer	36,985	36,478	507	1.4%
Dayville	150	149	1	0.7%	King City	3,425	3,111	314	10.1%
Depoe Bay	1,420	1,398	22	1.6%	Klamath Falls	21,580	20,840	740	3.6%
Detroit	210	202	8	4.0%	La Grande	13,165	13,082	83	0.6%
Donald	980	979	1	0.1%	La Pine	1,670	1,653	17	1.0%
Drain	1,160	1,151	9	0.8%	Lafayette	3,905	3,742	163	4.4%
Dufur	605	604	1	0.2%	Lake Oswego	37,300	36,619	681	1.9%
Dundee	3,185	3,162	23	0.7%	Lakeside	1,705	1,699	6	0.4%
Dunes City	1,315	1,303	12	0.9%	Lakeview	2,300	2,294	6	0.3%
Durham	1,880	1,351	529	39.2%	Lebanon	15,740	15,518	222	1.4%
Eagle Point	8,695	8,469	226	2.7%	Lexington*	255	238	17	7.1%
Echo	705	699	6	0.9%	Lincoln City	8,485	7,930	555	7.0%
Elgin	1,730	1,711	19	1.1%	Lonerock	20	21	-1	-4.8%
Elkton	205	195	10	5.1%	Long Creek	195	197	-2	-1.0%
Lostine	215	213	2	0.9%	Sandy	10,395	9,570	825	8.6%
Lowell	1,065	1,045	20	1.9%	Scappoose	6,745	6,592	153	2.3%
Lyons	1,160	1,161	-1	-0.1%	Scio	850	838	12	1.4%
Madras	6,265	6,046	219	3.6%	Scotts Mills	365	357	8	2.2%

**Table 7. Alphabetical Listing of Incorporated Cities with Population for July 1, 2015,****Census 2010 Population and Change since Census 2010.**

Prepared by Population Research Center, PSU, April 2016.

City	Estimate	Census		Percent	City	Estimate	Census		Percent
	July 1, 2015	April 1, 2010	Change 2010-2015	Change 2010-2015		July 1, 2015	April 1, 2010	Change 2010-2015	Change 2010-2015
Malin	815	805	10	1.2%	Seaside	6,585	6,457	128	2.0%
Manzanita	620	598	22	3.7%	Seneca	215	199	16	8.0%
Maupin	425	418	7	1.7%	Shady Cove	3,025	2,904	121	4.2%
Maywood Park	750	752	-2	-0.3%	Shaniko	35	36	-1	-2.8%
McMinnville	33,080	32,187	893	2.8%	Sheridan	6,115	6,127	-12	-0.2%
Medford	77,655	74,907	2,748	3.7%	Sherwood	19,080	18,194	886	4.9%
Merrill	840	844	-4	-0.5%	Siletz	1,235	1,212	23	1.9%
Metolius	710	710	0	0.0%	Silverton	9,590	9,222	368	4.0%
Mill City	1,855	1,855	0	0.0%	Sisters	2,280	2,038	242	11.9%
Millersburg	1,620	1,329	291	21.9%	Sodaville	325	308	17	5.5%
Milton-Freewater	7,070	7,050	20	0.3%	Spray	160	160	0	0.0%
Milwaukie	20,505	20,291	214	1.1%	Springfield	60,135	59,403	732	1.2%
Mitchell	130	130	0	0.0%	St. Helens	13,095	12,883	212	1.6%
Molalla	8,940	8,108	832	10.3%	St. Paul	425	421	4	1.0%
Monmouth	9,640	9,534	106	1.1%	Stanfield	2,125	2,043	82	4.0%
Monroe	620	617	3	0.5%	Stayton	7,725	7,644	81	1.1%
Monument	130	128	2	1.6%	Sublimity	2,755	2,681	74	2.8%
Moro	325	324	1	0.3%	Summerville	135	135	0	0.0%
Mosier	445	433	12	2.8%	Sumpter	205	204	1	0.5%
Mt. Angel	3,410	3,286	124	3.8%	Sutherlin	7,975	7,810	165	2.1%
Mt. Vernon	525	527	-2	-0.4%	Sweet Home	9,090	8,925	165	1.8%
Myrtle Creek	3,480	3,439	41	1.2%	Talent	6,270	6,066	204	3.4%
Myrtle Point	2,525	2,514	11	0.4%	Tangent	1,200	1,164	36	3.1%
Nehalem	280	271	9	3.3%	The Dalles	14,515	13,620	895	6.6%
Newberg	22,900	22,068	832	3.8%	Tigard	49,280	48,035	1,245	2.6%
Newport	10,165	9,989	176	1.8%	Tillamook	4,900	4,935	-35	-0.7%
North Bend	9,755	9,695	60	0.6%	Toledo	3,490	3,465	25	0.7%
North Plains	2,015	1,947	68	3.5%	Troutdale	16,020	15,962	58	0.4%
North Powder	445	439	6	1.4%	Tualatin	26,590	26,054	536	2.1%
Nyssa	3,285	3,267	18	0.6%	Turner	1,920	1,854	66	3.6%
Oakland	940	927	13	1.4%	Ukiah*	245	186	59	31.7%
Oakridge	3,240	3,205	35	1.1%	Umatilla	7,060	6,906	154	2.2%
Ontario	11,465	11,366	99	0.9%	Union	2,150	2,121	29	1.4%
Oregon City	33,940	31,859	2,081	6.5%	Unity	75	71	4	5.6%
Paisley	245	243	2	0.8%	Vale	1,875	1,874	1	0.1%
Pendleton	16,845	16,612	233	1.4%	Veneta	4,700	4,561	139	3.0%
Philomath	4,650	4,584	66	1.4%	Vernonia	2,065	2,151	-86	-4.0%
Phoenix	4,585	4,538	47	1.0%	Waldport	2,075	2,033	42	2.1%
Pilot Rock	1,505	1,502	3	0.2%	Wallowa	810	808	2	0.2%
Port Orford	1,140	1,133	7	0.6%	Warrenton	5,175	4,989	186	3.7%
Portland	613,355	583,776	29,579	5.1%	Wasco	420	410	10	2.4%
Powers	695	689	6	0.9%	Waterloo	230	229	1	0.4%
Prairie City	910	909	1	0.1%	West Linn	25,605	25,109	496	2.0%
Prescott	55	55	0	0.0%	Westfir	255	253	2	0.8%
Prineville**	9,460	9,253	207	2.2%	Weston	685	667	18	2.7%
Rainier	1,905	1,895	10	0.5%	Wheeler	405	414	-9	-2.2%
Redmond	27,050	26,215	835	3.2%	Willamina	2,045	2,025	20	1.0%
Reedsport	4,150	4,154	-4	-0.1%	Wilsonville	22,870	19,509	3,361	17.2%
Richland	175	156	19	12.2%	Winston	5,410	5,379	31	0.6%
Riddle	1,185	1,185	0	0.0%	Wood Village	3,910	3,878	32	0.8%
Rivergrove*	495	289	206	71.3%	Woodburn	24,670	24,080	590	2.5%
Rockaway Beach	1,335	1,312	23	1.8%	Yachats	725	690	35	5.1%
Rogue River	2,175	2,131	44	2.1%	Yamhill	1,070	1,024	46	4.5%
Roseburg	22,500	21,181	1,319	6.2%	Yoncalla	1,060	1,047	13	1.2%
Rufus	280	249	31	12.4%					
Salem	160,690	154,637	6,053	3.9%					

\*Conducted a local enumeration after Census 2010.

\*\*Revised July 1, 2015 certified population retroactive to Dec. 31, 2015.



**Table 8. Population Added to Incorporated Cities Due to Annexations: April 1, 2010 - July 1, 2015**

Prepared by Population Research Center, PSU, April 2016.

Adair Village	0	Depoe Bay	0	Independence	1	Myrtle Creek	0	Springfield	21
Adams	0	Detroit	0	Ione	0	Myrtle Point	0	St. Helens	6
Adrian	0	Donald	0	Irrigon	0	Nehalem	0	St. Paul	0
Albany	0	Drain	1	Island City	0	Newberg	3	Stanfield	2
Amity	0	Dufur	0	Jacksonville	0	Newport	0	Stayton	2
Antelope	0	Dundee	0	Jefferson	0	North Bend	0	Sublimity	0
Arlington	0	Dunes City	0	John Day	6	North Plains	0	Summerville	0
Ashland	0	Durham	0	Johnson City	0	North Powder	0	Sumpter	0
Astoria	0	Eagle Point	0	Jordan Valley	0	Nyssa	0	Sutherlin	23
Athena	0	Echo	0	Joseph	0	Oakland	0	Sweet Home	4
Aumsville	4	Elgin	0	Junction City	0	Oakridge	0	Talent	0
Aurora	0	Elkton	0	Keizer	4	Ontario	40	Tangent	0
Baker City	0	Enterprise	0	King City	0	Oregon City	2	The Dalles	811
Bandon	0	Estacada	0	Klamath Falls	2	Paisley	0	Tigard	46
Banks	0	Eugene	7	La Grande	9	Pendleton	0	Tillamook	10
Barlow	0	Fairview	0	La Pine	0	Philomath	2	Toledo	0
Bay City	0	Falls City	0	Lafayette	0	Phoenix	0	Troutdale	0
Beaverton	382	Florence	0	Lake Oswego	11	Pilot Rock	0	Tualatin	2
Bend	0	Forest Grove	262	Lakeside	0	Port Orford	0	Turner	0
Boardman	0	Fossil	0	Lakeview	1	Portland	2	Ukiah	0
Bonanza	0	Garibaldi	0	Lebanon	2	Powers	0	Umatilla	0
Brookings	0	Gaston	0	Lexington	0	Prairie City	0	Union	0
Brownsville	0	Gates	0	Lincoln City	361	Prescott	0	Unity	0
Burns	0	Gearhart	0	Lonerock	0	Prineville	2	Vale	0
Butte Falls	0	Gervais	0	Long Creek	0	Rainier	0	Veneta	0
Canby	4	Gladstone	0	Lostine	0	Redmond	0	Vernonia	0
Cannon Beach	0	Glendale	0	Lowell	0	Reedsport	0	Waldport	0
Canyon City	0	Gold Beach	0	Lyons	0	Richland	7	Wallowa	0
Canyonville	0	Gold Hill	0	Madras	161	Riddle	0	Warrenton	0
Carlton	0	Granite	0	Malin	10	Rivergrove	0	Wasco	0
Cascade Locks	0	Grants Pass	1,338	Manzanita	0	Rockaway Beach	0	Waterloo	0
Cave Junction	0	Granite	0	Maupin	0	Rogue River	0	West Linn	6
Central Point	0	Grass Valley	0	Maywood Park	0	Roseburg	631	Westfir	0
Chiloquin	0	Greenhorn	0	McMinnville	0	Rufus	0	Weston	0
Clatskanie	0	Gresham	2	Medford	1	Salem	152	Wheeler	0
Coburg	0	Haines	0	Merrill	0	Sandy	0	Willamina	0
Columbia City	3	Halfway	0	Metolius	0	Scappoose	1	Wilsonville	2
Condon	0	Halsey	0	Mill City	1	Scio	0	Winston	4
Coos Bay	0	Happy Valley	42	Millersburg	0	Scotts Mills	0	Wood Village	0
Coquille	0	Harrisburg	0	Milton-Freewater	0	Seaside	0	Woodburn	0
Cornelius	0	Helix	0	Milwaukie	190	Seneca	0	Yachats	0
Corvallis	4	Heppner	0	Mitchell	0	Shady Cove	0	Yamhill	0
Cottage Grove	0	Hermiston	23	Molalla	0	Shaniko	0	Yoncalla	0
Cove	0	Hillsboro	244	Monmouth	0	Sheridan	0		
Creswell	2	Hines	0	Monroe	0	Sherwood	0		
Culver	0	Hood River	5	Monument	0	Siletz	0		
Dallas	23	Hubbard	0	Moro	0	Silverton	0		
Damascus	0	Huntington	0	Mosier	0	Sisters	0		
Dayton	0	Idanha	0	Mt. Angel	0	Sodaville	0		
Dayville	0	Imbler	0	Mt. Vernon	0	Spray	0		

**Table 9. Population Estimates by Age and Sex for Oregon and Its Counties: July 1, 2015**

Prepared by Population Research Center, PSU, April 2016.

Age Group	Total Population																			All Ages
	0-4	5-9	10-14	15-17	18-19	20-24	25-29	30-34	35-39	40-44	45-49	50-54	55-59	60-64	65-69	70-74	75-79	80-84	85+	
<b>OREGON</b>	<b>241,795</b>	<b>235,647</b>	<b>242,822</b>	<b>147,806</b>	<b>105,092</b>	<b>256,791</b>	<b>273,970</b>	<b>272,264</b>	<b>269,161</b>	<b>260,820</b>	<b>260,132</b>	<b>263,708</b>	<b>269,245</b>	<b>257,006</b>	<b>216,708</b>	<b>164,044</b>	<b>114,350</b>	<b>79,329</b>	<b>83,154</b>	<b>4,013,845</b>
BAKER	895	788	903	615	290	590	748	820	879	873	962	1,112	1,322	1,433	1,355	1,094	761	526	460	16,425
BENTON	3,533	3,869	4,363	3,173	5,717	13,913	6,554	5,259	4,603	4,475	4,777	5,158	5,549	5,313	4,518	3,326	2,406	1,639	1,862	90,005
CLACKAMAS	21,623	24,045	26,364	16,403	9,296	20,467	22,243	23,272	25,313	26,915	28,459	29,243	29,768	27,446	22,088	16,375	11,314	7,748	9,004	397,385
CLATSOP	2,151	1,973	2,102	1,326	952	2,112	2,019	2,218	2,258	2,155	2,368	2,504	3,016	3,019	2,753	1,878	1,270	867	809	37,750
COLUMBIA	2,700	2,907	3,395	2,030	1,100	2,304	2,427	3,153	3,140	3,521	3,502	3,904	3,899	3,809	3,075	2,188	1,546	902	888	50,390
COOS	3,439	3,057	3,289	2,105	1,431	2,817	3,067	3,468	3,317	3,307	3,704	4,227	4,960	5,311	4,931	4,086	2,859	1,958	1,657	62,990
CROOK	1,040	1,128	1,258	760	366	839	882	1,068	1,060	1,184	1,333	1,445	1,645	1,841	1,772	1,392	941	597	535	21,085
CURRY	833	793	987	642	327	713	870	881	1,046	1,011	1,292	1,522	1,984	2,420	2,322	1,951	1,250	849	777	22,470
DESCHUTES	10,405	10,507	10,929	6,345	3,656	8,495	10,244	10,874	11,692	11,549	11,439	11,459	11,567	11,889	10,317	7,702	4,993	3,387	3,293	170,740
DOUGLAS	5,670	5,474	6,163	3,992	2,386	5,136	5,195	5,817	5,709	5,989	6,514	7,392	8,386	9,005	8,335	6,924	5,005	3,422	3,394	109,910
GILLIAM	109	72	106	66	24	55	71	100	83	111	127	149	184	192	172	125	83	64	82	1,975
GRANT	312	303	391	237	113	244	275	351	365	356	436	486	640	698	702	553	424	264	280	7,430
HARNEY	391	397	433	309	159	272	364	406	386	393	436	484	578	620	564	415	313	187	187	7,295
HOOD RIVER	1,515	1,672	1,716	1,037	577	1,256	1,451	1,507	1,569	1,748	1,735	1,796	1,725	1,433	1,168	769	623	422	526	24,245
JACKSON	12,367	11,375	12,698	7,633	5,004	11,839	11,959	12,212	12,257	12,466	13,002	13,931	15,111	15,363	13,686	10,861	7,855	5,529	5,827	210,975
JEFFERSON	1,514	1,292	1,515	908	504	1,151	1,287	1,280	1,296	1,354	1,506	1,516	1,651	1,630	1,432	1,121	706	464	321	22,445
JOSEPHINE	4,228	4,141	4,824	3,002	1,728	3,650	3,861	4,373	4,245	4,438	4,950	5,550	6,239	7,111	6,465	5,498	3,901	2,710	2,806	83,720
KLAMATH	3,891	3,650	4,038	2,498	1,719	3,965	3,665	3,755	3,768	3,837	4,222	4,423	4,993	4,987	4,592	3,550	2,559	1,587	1,410	67,110
LAKE	355	330	409	301	104	277	344	452	443	544	547	617	651	721	665	481	373	214	182	8,010
LANE	17,578	17,658	19,380	12,873	12,440	31,325	24,903	23,383	21,444	21,347	21,730	23,098	24,897	24,412	21,344	16,502	11,234	8,124	8,478	362,150
LINCOLN	2,367	1,965	2,175	1,377	832	1,837	2,144	2,466	2,464	2,447	2,733	3,286	4,111	4,656	4,377	3,322	2,118	1,364	1,182	47,225
LINN	7,841	7,602	8,029	4,697	2,995	6,864	7,311	7,518	7,655	7,168	7,698	7,801	8,390	7,928	6,996	5,413	3,798	2,643	2,512	120,860
MALHEUR	2,284	2,083	2,117	1,253	920	2,043	2,050	1,988	1,992	1,919	1,880	1,897	1,886	1,801	1,646	1,321	989	658	754	31,480
MARION	24,211	23,461	23,052	14,017	9,751	22,285	22,570	21,715	20,855	20,171	20,010	20,147	20,075	18,719	15,541	12,055	8,518	6,156	6,460	329,770
MORROW	762	847	906	549	322	626	667	649	740	695	734	775	769	807	616	486	321	195	164	11,630
MULTNOMAH	47,387	41,977	40,081	23,148	18,386	54,664	71,586	69,730	65,623	58,376	52,724	50,009	47,490	41,779	32,617	23,026	15,652	10,961	12,273	777,490
POLK	5,155	5,028	5,476	3,230	2,860	6,017	4,689	4,447	4,728	4,677	4,602	4,777	4,881	4,741	4,237	3,298	2,463	1,662	1,603	78,570
SHERMAN	103	83	99	59	28	61	74	104	108	86	120	122	129	168	124	119	92	60	52	1,790
TILLAMOOK	1,492	1,287	1,435	885	496	1,012	1,186	1,284	1,401	1,410	1,489	1,795	2,102	2,255	2,167	1,613	1,097	721	563	25,690
UMATILLA	5,884	5,653	5,637	3,402	2,201	5,026	5,315	5,055	5,161	4,945	4,890	4,933	5,031	4,546	3,814	2,830	2,009	1,454	1,370	79,155
UNION	1,771	1,635	1,610	1,033	917	1,803	1,551	1,348	1,447	1,424	1,520	1,633	1,822	1,847	1,651	1,291	930	658	733	26,625
WALLOWA	431	379	361	212	98	207	252	373	316	381	383	474	583	667	639	498	343	248	256	7,100
WASCO	1,734	1,596	1,627	1,038	605	1,347	1,504	1,539	1,539	1,513	1,515	1,695	1,836	1,939	1,660	1,270	946	625	844	26,370
WASHINGTON	39,212	39,769	37,798	22,264	13,264	34,535	44,417	43,096	43,584	41,349	40,157	37,542	34,634	30,046	22,900	16,719	11,606	8,364	9,254	570,510
WHEELER	72	54	77	55	20	36	57	68	72	54	83	89	132	117	150	102	97	59	52	1,445
YAMHILL	6,540	6,799	7,081	4,333	3,504	7,008	6,169	6,238	6,605	6,631	6,554	6,716	6,606	6,341	5,319	3,890	2,953	2,040	2,304	103,630

**Table 9. Population Estimates by Age and Sex for Oregon and Its Counties: July 1, 2015**

Prepared by Population Research Center, PSU, April 2016.

**Male Population**

<b>Age Group</b>	<b>0-4</b>	<b>5-9</b>	<b>10-14</b>	<b>15-17</b>	<b>18-19</b>	<b>20-24</b>	<b>25-29</b>	<b>30-34</b>	<b>35-39</b>	<b>40-44</b>	<b>45-49</b>	<b>50-54</b>	<b>55-59</b>	<b>60-64</b>	<b>65-69</b>	<b>70-74</b>	<b>75-79</b>	<b>80-84</b>	<b>85+</b>	<b>All Ages</b>
<b>OREGON</b>	<b>124,034</b>	<b>120,049</b>	<b>124,493</b>	<b>75,970</b>	<b>53,452</b>	<b>130,119</b>	<b>137,993</b>	<b>137,010</b>	<b>135,196</b>	<b>130,840</b>	<b>129,863</b>	<b>130,323</b>	<b>130,804</b>	<b>124,041</b>	<b>103,639</b>	<b>77,768</b>	<b>52,048</b>	<b>33,921</b>	<b>29,196</b>	<b>1,980,760</b>
BAKER	422	408	451	332	161	313	404	448	486	458	513	547	651	696	690	534	391	244	181	8,328
BENTON	1,742	1,835	2,229	1,626	2,860	7,470	3,590	2,665	2,298	2,220	2,336	2,489	2,691	2,587	2,175	1,617	1,108	708	685	44,931
CLACKAMAS	11,349	12,195	13,670	8,352	4,885	10,504	11,195	11,538	12,504	13,245	13,972	14,340	14,458	13,273	10,523	7,600	5,069	3,181	2,948	194,799
CLATSOP	1,004	999	1,015	716	497	1,120	1,041	1,188	1,150	1,104	1,190	1,238	1,460	1,468	1,329	947	606	371	297	18,740
COLUMBIA	1,396	1,473	1,793	1,064	582	1,205	1,210	1,573	1,542	1,759	1,751	1,948	1,947	1,868	1,594	1,051	737	388	318	25,200
COOS	1,769	1,529	1,671	1,051	736	1,424	1,555	1,754	1,695	1,646	1,866	2,104	2,408	2,577	2,377	2,000	1,368	894	701	31,123
CROOK	543	570	656	391	193	431	426	518	522	579	637	724	762	891	896	711	457	297	210	10,415
CURRY	446	413	527	341	181	376	459	445	526	453	633	733	981	1,156	1,188	947	612	415	309	11,139
DESCHUTES	5,357	5,397	5,643	3,284	1,897	4,324	5,158	5,429	5,815	5,695	5,597	5,546	5,378	5,722	5,047	3,868	2,335	1,582	1,180	84,255
DOUGLAS	2,934	2,754	3,177	2,064	1,276	2,639	2,595	2,953	2,811	2,954	3,221	3,654	4,039	4,442	4,118	3,434	2,362	1,585	1,264	54,274
GILLIAM	61	32	63	36	15	35	40	58	51	61	66	82	83	108	75	66	39	29	24	1,022
GRANT	148	145	187	127	65	119	139	179	193	164	216	217	319	334	374	293	222	120	116	3,677
HARNEY	211	208	219	174	86	148	162	218	187	187	203	239	286	323	303	220	165	86	75	3,699
HOOD RIVER	761	912	880	531	320	683	749	754	797	840	879	889	877	736	574	375	294	164	157	12,171
JACKSON	6,313	5,759	6,442	3,837	2,471	5,874	6,028	6,019	6,216	6,175	6,463	6,829	7,265	7,247	6,542	5,204	3,596	2,383	2,122	102,784
JEFFERSON	823	646	795	458	261	622	677	706	728	733	810	793	876	816	734	618	358	223	123	11,801
JOSEPHINE	2,142	2,080	2,429	1,590	916	1,808	2,018	2,194	2,165	2,175	2,438	2,671	2,927	3,395	3,079	2,658	1,800	1,195	1,031	40,711
KLAMATH	1,940	1,921	2,025	1,291	893	1,998	1,833	1,881	1,888	1,930	2,112	2,167	2,437	2,447	2,272	1,744	1,239	727	529	33,275
LAKE	159	176	193	156	58	156	188	276	256	325	317	331	370	363	366	263	190	104	85	4,333
LANE	8,884	8,889	9,986	6,622	6,079	16,261	12,656	11,946	10,683	10,682	10,692	11,229	11,827	11,728	10,042	7,824	5,197	3,445	2,998	177,670
LINCOLN	1,184	1,007	1,083	755	451	984	1,114	1,256	1,286	1,175	1,360	1,543	1,897	2,164	2,053	1,621	974	638	427	22,972
LINN	4,139	3,935	4,102	2,374	1,531	3,384	3,611	3,686	3,826	3,567	3,826	3,867	4,116	3,862	3,375	2,547	1,724	1,182	916	59,570
MALHEUR	1,182	1,073	1,058	653	494	1,203	1,219	1,189	1,183	1,131	1,073	1,089	986	981	821	635	488	293	307	17,056
MARION	12,563	11,989	11,882	7,225	5,040	11,556	11,462	11,135	10,408	10,212	9,997	9,991	9,766	8,954	7,202	5,604	3,761	2,567	2,199	163,514
MORROW	401	419	463	275	176	347	363	322	390	356	389	387	378	423	298	240	161	104	71	5,965
MULTNOMAH	24,244	21,387	20,481	11,831	9,111	26,479	35,206	34,825	33,199	29,708	26,803	25,124	23,626	20,391	15,385	10,526	6,726	4,320	3,948	383,319
POLK	2,606	2,618	2,773	1,676	1,338	2,891	2,309	2,163	2,303	2,268	2,317	2,288	2,323	2,248	1,978	1,562	1,129	742	623	38,156
SHERMAN	49	41	52	32	14	33	33	57	63	44	66	60	63	90	60	54	46	25	30	911
TILLAMOOK	751	638	753	462	287	554	638	659	722	740	754	881	1,032	1,108	1,060	813	530	330	233	12,945
UMATILLA	3,072	2,786	2,927	1,756	1,156	2,812	3,006	2,838	2,835	2,720	2,620	2,579	2,643	2,297	1,899	1,440	950	647	518	41,500
UNION	912	862	806	576	473	847	823	680	698	740	707	809	901	903	834	652	423	282	242	13,170
WALLOWA	197	166	165	104	49	93	127	170	165	187	170	230	262	334	314	278	175	122	113	3,420
WASCO	850	806	794	559	324	678	793	771	781	757	736	842	895	974	864	621	443	266	303	13,056
WASHINGTON	20,012	20,444	19,430	11,382	6,816	17,198	21,853	21,256	21,415	20,440	19,764	18,476	16,594	14,035	10,562	7,308	4,952	3,346	3,068	278,352
WHEELER	42	29	39	32	15	18	33	46	33	24	35	40	64	50	81	42	50	27	20	718
YAMHILL	3,426	3,511	3,633	2,237	1,744	3,533	3,282	3,211	3,379	3,386	3,336	3,349	3,215	3,049	2,560	1,850	1,368	889	826	51,786

**Table 9. Population Estimates by Age and Sex for Oregon and Its Counties: July 1, 2015**

Prepared by Population Research Center, PSU, April 2016.

**Female Population**

<b>Age Group</b>	<b>0-4</b>	<b>5-9</b>	<b>10-14</b>	<b>15-17</b>	<b>18-19</b>	<b>20-24</b>	<b>25-29</b>	<b>30-34</b>	<b>35-39</b>	<b>40-44</b>	<b>45-49</b>	<b>50-54</b>	<b>55-59</b>	<b>60-64</b>	<b>65-69</b>	<b>70-74</b>	<b>75-79</b>	<b>80-84</b>	<b>85+</b>	<b>All Ages</b>
<b>OREGON</b>	<b>117,761</b>	<b>115,598</b>	<b>118,329</b>	<b>71,835</b>	<b>51,640</b>	<b>126,672</b>	<b>135,977</b>	<b>135,254</b>	<b>133,965</b>	<b>129,979</b>	<b>130,269</b>	<b>133,385</b>	<b>138,441</b>	<b>132,965</b>	<b>113,069</b>	<b>86,276</b>	<b>62,303</b>	<b>45,408</b>	<b>53,959</b>	<b>2,033,085</b>
BAKER	474	380	452	283	129	277	344	372	394	414	449	564	671	738	665	560	370	282	278	8,097
BENTON	1,791	2,034	2,133	1,547	2,857	6,443	2,964	2,594	2,305	2,255	2,441	2,669	2,858	2,726	2,343	1,709	1,297	930	1,177	45,074
CLACKAMAS	10,274	11,850	12,694	8,051	4,410	9,963	11,048	11,734	12,809	13,671	14,487	14,903	15,310	14,173	11,565	8,775	6,245	4,567	6,056	202,586
CLATSOP	1,146	975	1,087	609	455	992	978	1,029	1,108	1,051	1,178	1,266	1,556	1,550	1,424	931	665	496	512	19,010
COLUMBIA	1,303	1,433	1,602	966	518	1,099	1,218	1,580	1,598	1,762	1,750	1,957	1,952	1,942	1,481	1,137	809	514	570	25,190
COOS	1,670	1,528	1,617	1,054	695	1,392	1,512	1,714	1,622	1,661	1,838	2,123	2,552	2,735	2,555	2,086	1,491	1,065	956	31,867
CROOK	496	559	602	368	172	408	456	549	539	605	696	721	882	950	876	681	484	299	325	10,670
CURRY	387	380	460	302	146	337	411	436	519	558	659	790	1,003	1,263	1,134	1,005	638	435	468	11,331
DESCHUTES	5,048	5,110	5,286	3,061	1,759	4,171	5,086	5,445	5,877	5,853	5,842	5,912	6,189	6,166	5,270	3,834	2,658	1,805	2,114	86,485
DOUGLAS	2,736	2,720	2,987	1,928	1,110	2,498	2,600	2,864	2,898	3,035	3,293	3,738	4,348	4,563	4,218	3,490	2,643	1,837	2,130	55,636
GILLIAM	48	40	43	30	9	21	31	42	32	51	61	67	101	84	97	59	44	35	58	953
GRANT	164	158	204	110	48	125	136	172	172	193	220	269	321	364	328	259	202	144	164	3,753
HARNEY	181	189	214	135	73	125	202	188	200	206	234	245	291	297	261	195	148	100	112	3,596
HOOD RIVER	755	760	836	506	257	574	702	753	772	908	857	907	849	696	593	394	329	258	370	12,074
JACKSON	6,054	5,616	6,255	3,797	2,533	5,966	5,931	6,193	6,041	6,291	6,540	7,102	7,846	8,116	7,144	5,656	4,258	3,146	3,705	108,191
JEFFERSON	691	646	720	449	242	529	610	574	568	621	697	722	775	813	698	503	347	241	198	10,644
JOSEPHINE	2,086	2,062	2,395	1,412	812	1,841	1,843	2,178	2,080	2,263	2,512	2,879	3,312	3,716	3,386	2,840	2,102	1,515	1,775	43,009
KLAMATH	1,951	1,729	2,013	1,207	826	1,967	1,832	1,874	1,880	1,907	2,110	2,257	2,556	2,539	2,320	1,806	1,320	860	881	33,835
LAKE	196	153	215	145	45	121	156	176	188	219	230	286	281	359	300	218	183	110	97	3,677
LANE	8,694	8,770	9,394	6,251	6,362	15,064	12,247	11,436	10,761	10,665	11,038	11,869	13,070	12,684	11,302	8,678	6,036	4,679	5,480	184,480
LINCOLN	1,184	957	1,092	622	381	852	1,030	1,210	1,178	1,273	1,373	1,743	2,215	2,492	2,324	1,702	1,144	727	755	24,253
LINN	3,703	3,667	3,927	2,324	1,464	3,479	3,700	3,832	3,829	3,601	3,872	3,935	4,274	4,066	3,621	2,866	2,074	1,461	1,596	61,290
MALHEUR	1,102	1,009	1,059	600	426	841	832	799	809	788	808	808	900	819	825	686	501	365	447	14,424
MARION	11,648	11,472	11,170	6,793	4,711	10,729	11,108	10,580	10,447	9,959	10,012	10,156	10,309	9,765	8,339	6,451	4,758	3,589	4,261	166,256
MORROW	362	428	442	274	145	280	304	327	350	339	345	388	392	384	318	246	160	91	92	5,665
MULTNOMAH	23,143	20,591	19,600	11,317	9,276	28,185	36,380	34,905	32,425	28,668	25,921	24,885	23,864	21,388	17,232	12,500	8,926	6,640	8,326	394,171
POLK	2,549	2,409	2,702	1,555	1,522	3,126	2,380	2,284	2,425	2,409	2,285	2,489	2,557	2,493	2,259	1,736	1,334	919	980	40,414
SHERMAN	53	42	47	27	14	28	41	47	45	42	53	62	67	77	64	65	46	34	22	879
TILLAMOOK	741	648	682	424	209	459	548	625	679	670	735	914	1,070	1,146	1,107	800	567	391	329	12,745
UMATILLA	2,811	2,867	2,710	1,646	1,045	2,214	2,309	2,217	2,326	2,225	2,271	2,353	2,388	2,249	1,915	1,390	1,059	807	852	37,655
UNION	860	774	804	456	445	957	728	668	748	684	813	823	921	944	817	639	507	376	491	13,455
WALLOWA	233	213	196	108	49	114	126	203	151	194	213	244	321	333	325	221	167	126	144	3,680
WASCO	884	790	833	479	281	670	710	767	758	756	778	854	941	965	796	649	503	359	541	13,314
WASHINGTON	19,199	19,325	18,368	10,882	6,448	17,337	22,564	21,840	22,168	20,908	20,393	19,066	18,040	16,011	12,339	9,411	6,654	5,018	6,187	292,158
WHEELER	30	25	39	23	5	17	25	21	39	30	48	49	69	66	69	60	47	32	33	727
YAMHILL	3,114	3,288	3,448	2,096	1,760	3,474	2,887	3,027	3,225	3,245	3,217	3,367	3,390	3,292	2,758	2,040	1,585	1,151	1,478	51,844

**Table 9. Population Estimates by Age and Sex for Oregon and Its Counties: July 1, 2015**

Prepared by Population Research Center, PSU, April 2016.

**Table 10. Population Estimates by Age Group (less than 18 Years, 18-64 Years, and 65 Years and Older)  
for Oregon and Its Counties: July 1, 2015**

Prepared by Population Research Center, PSU, April 2016.

	Ages 0-17		Ages 18-64		Ages 65 and over		Total Population
	Population	% of Total Population	Population	% of Total Population	Population	% of Total Population	
<b>OREGON</b>	868,070	21.6%	2,488,189	62.0%	657,586	16.4%	4,013,845
<b>Counties</b>							
BAKER	3,200	19.5%	9,029	55.0%	4,196	25.5%	16,425
BENTON	14,937	16.6%	61,317	68.1%	13,750	15.3%	90,005
CLACKAMAS	88,435	22.3%	242,422	61.0%	66,529	16.7%	397,385
CLATSOP	7,552	20.0%	22,620	59.9%	7,578	20.1%	37,750
COLUMBIA	11,031	21.9%	30,760	61.0%	8,599	17.1%	50,390
COOS	11,889	18.9%	35,608	56.5%	15,492	24.6%	62,990
CROOK	4,186	19.9%	11,662	55.3%	5,236	24.8%	21,085
CURRY	3,255	14.5%	12,066	53.7%	7,149	31.8%	22,470
DESCHUTES	38,186	22.4%	102,862	60.2%	29,692	17.4%	170,740
DOUGLAS	21,300	19.4%	61,530	56.0%	27,080	24.6%	109,910
GILLIAM	353	17.9%	1,095	55.5%	527	26.7%	1,975
GRANT	1,243	16.7%	3,964	53.4%	2,223	29.9%	7,430
HARNEY	1,530	21.0%	4,099	56.2%	1,666	22.8%	7,295
HOOD RIVER	5,940	24.5%	14,797	61.0%	3,508	14.5%	24,245
JACKSON	44,073	20.9%	123,145	58.4%	43,757	20.7%	210,975
JEFFERSON	5,228	23.3%	13,173	58.7%	4,044	18.0%	22,445
JOSEPHINE	16,196	19.3%	46,145	55.1%	21,379	25.5%	83,720
KLAMATH	14,076	21.0%	39,335	58.6%	13,699	20.4%	67,110
LAKE	1,395	17.4%	4,700	58.7%	1,915	23.9%	8,010
LANE	67,489	18.6%	228,980	63.2%	65,681	18.1%	362,150
LINCOLN	7,884	16.7%	26,977	57.1%	12,364	26.2%	47,225
LINN	28,170	23.3%	71,328	59.0%	21,362	17.7%	120,860
MALHEUR	7,737	24.6%	18,376	58.4%	5,368	17.1%	31,480
MARION	84,741	25.7%	196,299	59.5%	48,730	14.8%	329,770
MORROW	3,064	26.3%	6,784	58.3%	1,782	15.3%	11,630
MULTNOMAH	152,593	19.6%	530,368	68.2%	94,529	12.2%	777,490
POLK	18,889	24.0%	46,419	59.1%	13,263	16.9%	78,570
SHERMAN	344	19.2%	1,000	55.8%	446	24.9%	1,790
TILLAMOOK	5,099	19.8%	14,430	56.2%	6,161	24.0%	25,690
UMATILLA	20,574	26.0%	47,103	59.5%	11,477	14.5%	79,155
UNION	6,050	22.7%	15,311	57.5%	5,264	19.8%	26,625
WALLOWA	1,382	19.5%	3,734	52.6%	1,984	27.9%	7,100
WASCO	5,995	22.7%	15,031	57.0%	5,344	20.3%	26,370
WASHINGTON	139,043	24.4%	362,624	63.6%	68,844	12.1%	570,510
WHEELER	257	17.8%	727	50.3%	461	31.9%	1,445
YAMHILL	24,753	23.9%	62,370	60.2%	16,507	15.9%	103,630